

Customer Information Sheet

IF IN DOUBT - ASK

©

NOT TO SCALE

THIRD ANGLE PROJECTION

ALL DIMENSIONS IN mm

ORDER CODE:

F30-10XXXX45R

HEIGHT: _____
SEE TABLE 1

No. OF CONTACTS: _____
SEE TABLE 1

TABLE 1: VARIANTS

PART No.	CONNECTOR HEIGHT DIM 'F'	No. OF CONTACTS		
		60	80	-
F30-100XXX45R	6.8	60	80	-
F30-101XXX45R	7.8	60	80	-
F30-102XXX45R	19.75±0.25	60	80	100

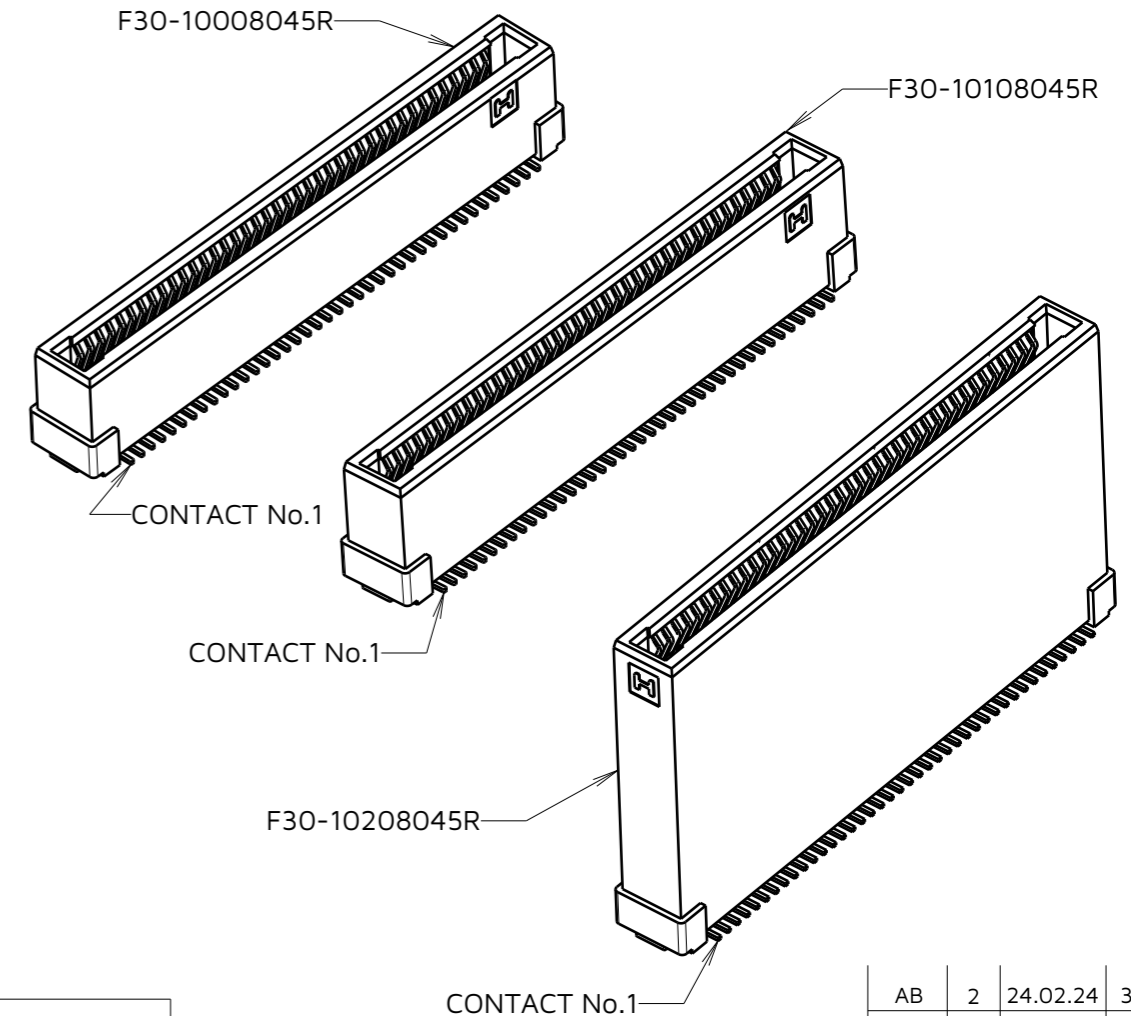
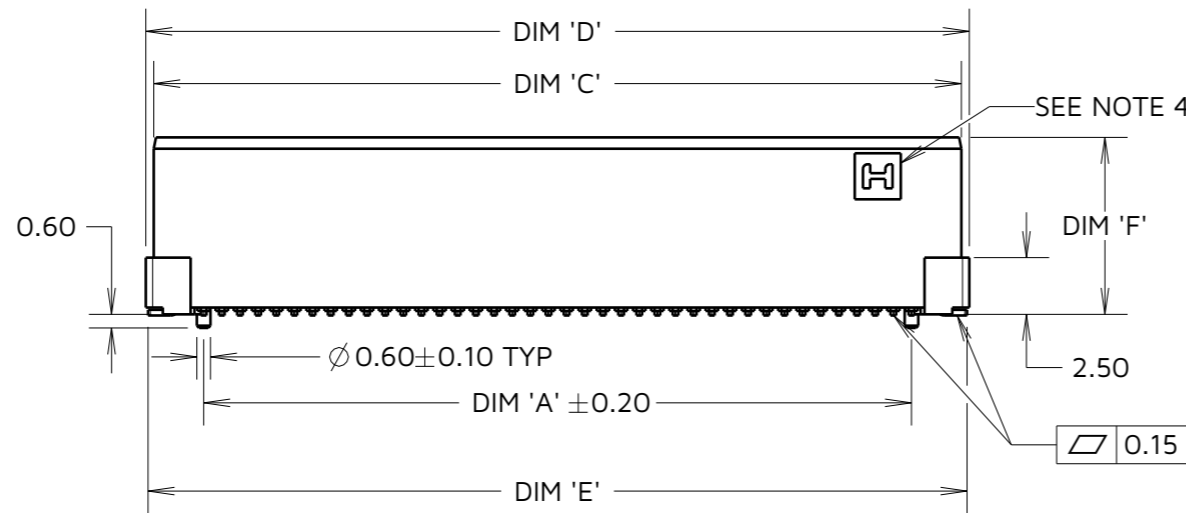
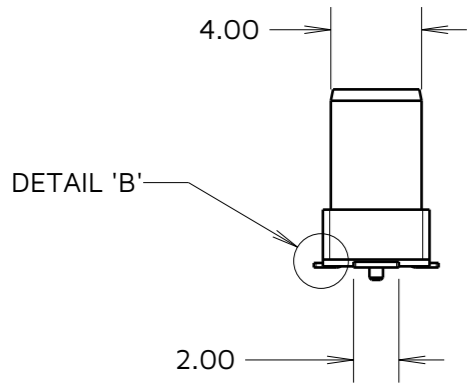
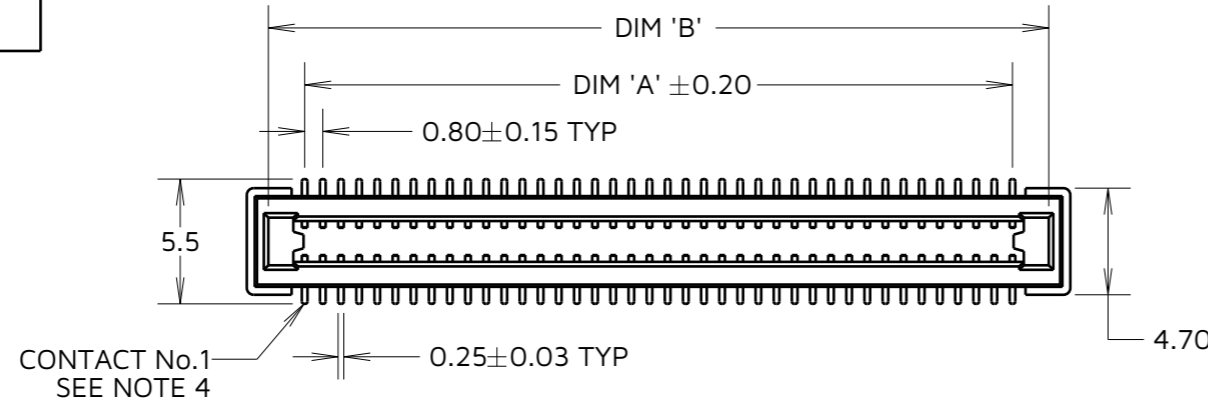
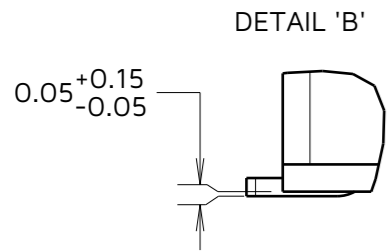
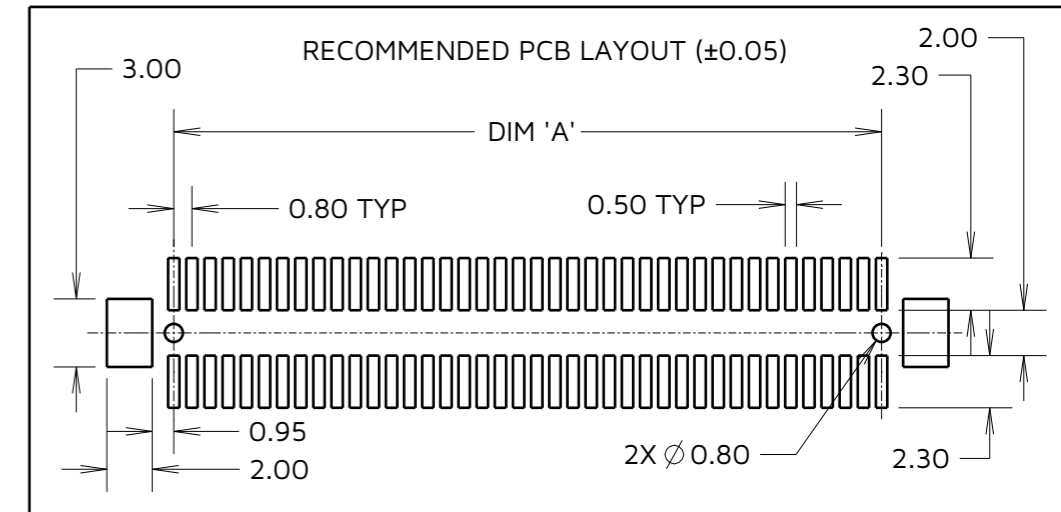


TABLE 2: DIMENSIONS

No. OF CONTACTS	DIM 'A'	DIM 'B'	DIM 'C'	DIM 'D'	DIM 'E'
60	23.20	26.4	27.6	28.3	28.1
80	31.20	34.4	35.6	36.3	36.1
100	39.20	42.4	43.6	44.3	44.1

TOLERANCES

X. = ±0.30mm	X.° = ±5.0°
.X = ±0.25mm	.X° = ±3.0°
.XX = ±0.15mm	.XX° = ±2.0°
.XXX = ±0.10mm	.XXX° = ±1.0°

AB	2	24.02.24	33735
NAME	ISS.	DATE	CN/CO
APPROVED: F.CHRISPINE			
CHECKED: A.YEOMANS			
DRAWN: A.BOXALL			
ASSEMBLY DRG:			

NOTES:

- SEE COMPONENT SPECIFICATION C057XX (LATEST ISSUE) FOR COMPLETE CONNECTOR SPECIFICATIONS.
- SEE SHEET 4 FOR TAPE AND REEL DETAILS.
- PART SHOWN IS F30-10108045R, SEE ORDER CODE FOR POSSIBLE CONFIGURATIONS.
- HARWIN LOGO SHOWN IN THIS ORIENTATION FOR REFERENCE ONLY. LOGO IS UNRELATED TO CONTACT No.1 AS CONTACT No.1 WILL ALWAYS BE IN THIS POSITION.

HARWIN

www.harwin.com

TOLERANCES
X. = ±1mm
X.X = ±0.50mm
X.XX = ±0.20mm
X.XXX = ±0.01mm
ANGLES = ±5°
UNLESS STATED

THIS DRAWING AND ANY INFORMATION OR DESCRIPTIVE MATTER SET OUT HEREON ARE CONFIDENTIAL AND COPYRIGHT PROPERTY OF THE HARWIN GROUP AND MUST NOT BE DISCLOSED, LOANED, COPIED OR USED FOR MANUFACTURING, TENDERING OR FOR ANY OTHER PURPOSE WITHOUT THEIR WRITTEN PERMISSION.

MATERIAL:

SEE NOTE 1

TITLE:

0.8mm PITCH FEMALE FLECTO CONNECTOR

DRAWING NUMBER:

F30-10XXXX45R

SHT
3
OF
4

Customer Information Sheet

IF IN DOUBT - ASK

©

NOT TO SCALE

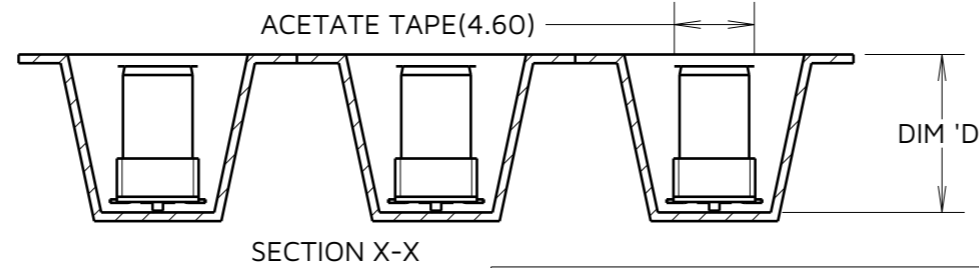
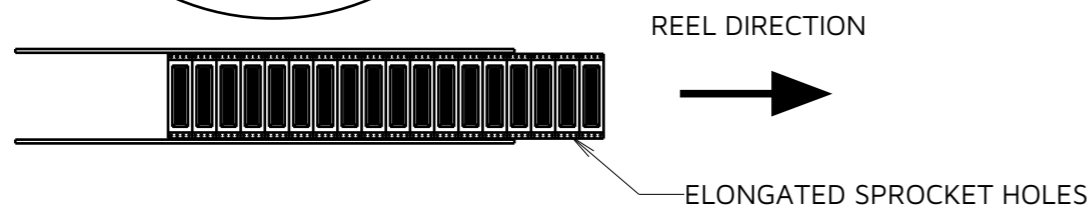
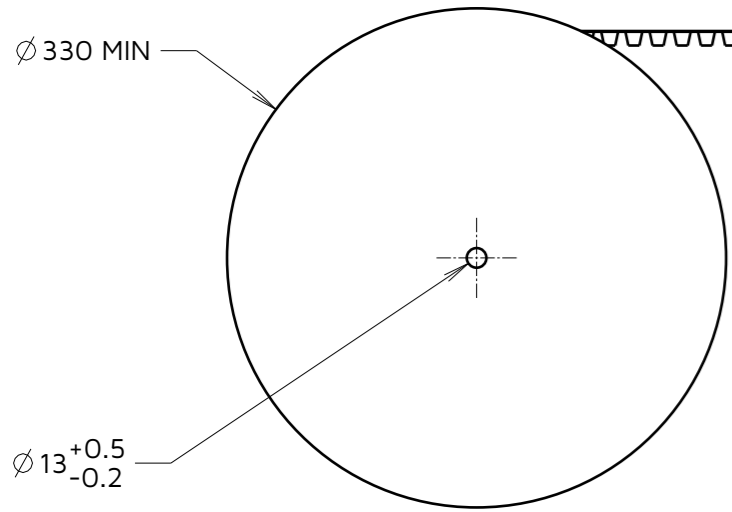
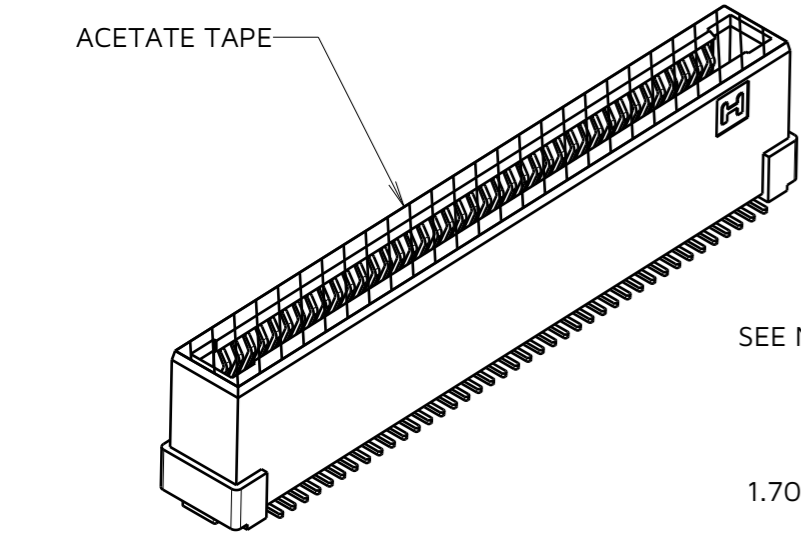
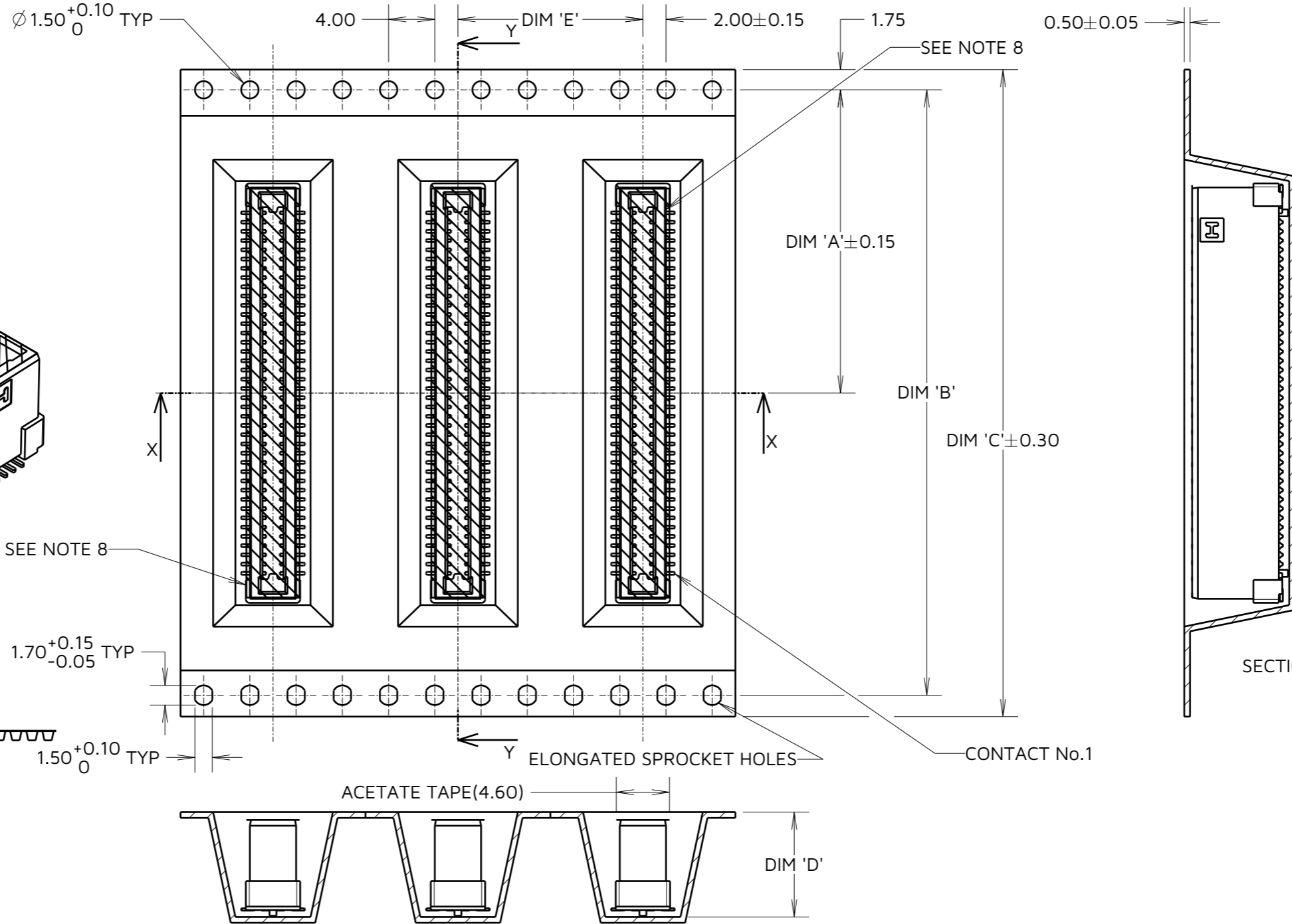
THIRD ANGLE PROJECTION

ALL DIMENSIONS IN mm

ORDER CODE:
F30-10XXXX45R

HEIGHT:
SEE TABLE 1

No. OF CONTACTS:
SEE TABLE 1



HEIGHT	No. OF CONTACTS	DIM 'A'	DIM 'B'	DIM 'C'	DIM 'D'	DIM 'E'	REEL QTY
0	60	26.20	52.40	56.00	08.08	16.00	500PCS
	80						
1	60				09.08		400PCS
	80						
2	60				20.85	24.00	100PCS
	80						
	100						

AB	2	24.02.24	33735
NAME	ISS.	DATE	CN/CO
APPROVED: F.CHRISPINE			
CHECKED: A.YEOMANS			
DRAWN: A.BOXALL			
ASSEMBLY DRG:			

- NOTES:
- PRODUCT TAPE AND REELED IN ACCORDANCE WITH EIA-481 STANDARD.
 - CARRIER TAPE MATERIAL: BLACK POLYSTYRENE.
 - TAPE POCKETS MAY DIFFER VISUALLY FROM DRAWING.
 - POSITION OF HARWIN LOGO IS NOT CRITICAL AND MAY BE IN EITHER MARKED POSITION. LOGO DOES NOT AFFECT CONTACT No.1.

HARWIN

www.harwin.com

TOLERANCES
 X. = ±1mm
 X.X = ±0.50mm
 X.XX = ±0.20mm
 X.XXX = ±0.01mm
 ANGLES = ±5°
 UNLESS STATED

THIS DRAWING AND ANY INFORMATION OR DESCRIPTIVE MATTER SET OUT HEREON ARE CONFIDENTIAL AND COPYRIGHT PROPERTY OF THE HARWIN GROUP AND MUST NOT BE DISCLOSED, LOANED, COPIED OR USED FOR MANUFACTURING, TENDERING OR FOR ANY OTHER PURPOSE WITHOUT THEIR WRITTEN PERMISSION.

MATERIAL:

SEE NOTE 6

TITLE:

0.8mm PITCH FEMALE FLECTO CONNECTOR

DRAWING NUMBER:

F30-10XXXX45R

SHT
4 OF 4