

Customer Information Sheet

DRAWING No.: G125-XCX08XX-XXXX-XXXXXX

IF IN DOUBT - ASK

©

NOT TO SCALE

THIRD ANGLE PROJECTION

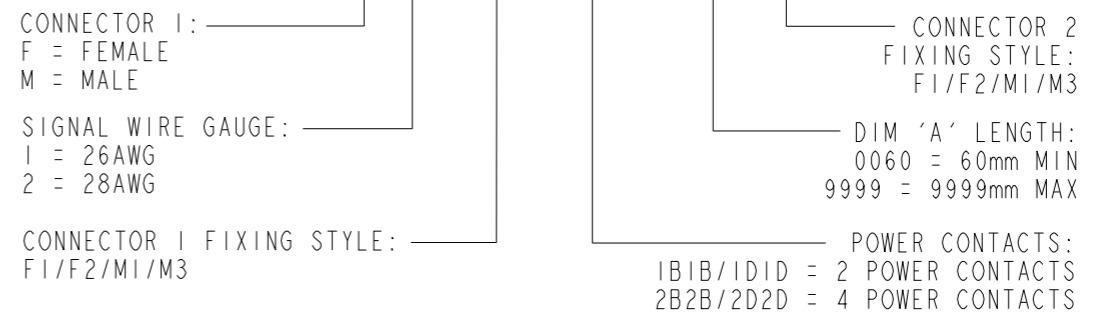
ALL DIMENSIONS IN mm

TABLE 1: CONFIGURATIONS & BILL OF MATERIALS

ORDER CODE CONFIGURATIONS										BOM ITEM No.															
										1	2	3	4	5	6	7	8								
G125-XCX08XX-XXXX-XXXXXX										CONNECTOR 1 (SEE ORDER CODE FOR TOTAL No. OF CONTACTS)		CONNECTOR 1 SIGNAL CONTACT (SEE ORDER CODE FOR QTY.)		CONNECTOR 1 POWER CONTACT (SEE ORDER CODE FOR QTY.)		PTFE SIGNAL WIRE (SEE C049XX OR USE PART NUMBERS BELOW)		PTFE POWER WIRE (SEE C049XX OR USE PART NUMBERS BELOW)		CONNECTOR 2 SIGNAL CONTACT (SEE ORDER CODE FOR QTY.)		CONNECTOR 2 POWER CONTACT (SEE ORDER CODE FOR QTY.)		CONNECTOR 2 (SEE ORDER CODE FOR TOTAL No. OF CONTACTS)	
G125	-	FC	1	08	F1 F2	-	IBIB 2B2B	XXXX	F1 F2	G125-22496F1-01-08-01 G125-22496F1-02-08-02 G125-22496F2-01-08-01 G125-22496F2-02-08-02	<u>FEMALE SIGNAL</u> 26AWG: G125-0010005	<u>FEMALE POWER</u> 18AWG: G125-0500005	<u>SIGNAL WIRE</u> 26AWG & 28AWG: WHITE WIRE (SEE C049XX)	<u>POWER WIRE</u> 18AWG: WHITE WIRE (SEE C049XX)	<u>FEMALE SIGNAL</u> 26AWG: G125-0010005	<u>FEMALE POWER</u> 18AWG: G125-0500005	G125-22496F1-01-08-01 G125-22496F1-02-08-02 G125-22496F2-01-08-01 G125-22496F2-02-08-02								
		MC			M1 M3		IDID 2D2D		M1 M3	G125-32496M1-01-08-01 G125-32496M1-02-08-02 G125-32496M3-01-08-01 G125-32496M3-02-08-02	<u>MALE SIGNAL</u> 26AWG: G125-1010005	<u>MALE POWER</u> 18AWG: G125-1500005			G125-32496M1-01-08-01 G125-32496M1-02-08-02 G125-32496M3-01-08-01 G125-32496M3-02-08-02										
		MC			M1 M3		IDID 2D2D		F1 F2	G125-32496M1-01-08-01 G125-32496M1-02-08-02 G125-32496M3-01-08-01 G125-32496M3-02-08-02	<u>MALE SIGNAL</u> 26AWG: G125-1020005				G125-22496F1-01-08-01 G125-22496F1-02-08-02 G125-22496F2-01-08-01 G125-22496F2-02-08-02										

ORDER CODE:

G125-XCX08XX-XXXX-XXXXXX



RTP	I	07.03.23	32231
NAME	ISS.	DATE	CN/CO
APPROVED: A.BOXALL			
CHECKED: M.RUDKIN			
DRAWN: R.PORTLOCK			
CUSTOMER REF.:			
ASSEMBLY DRG:			

NOTES:

- FOR COMPLETE SPECIFICATION, INCLUDING WIRE TYPE, GAUGE AND POTTING COMPOUND SEE COMPONENT SPECIFICATIONS C125XX & C049XX (LATEST ISSUES).
- SEE SHEET 9 FOR HARDWARE FIXING INFORMATION.
- FOR ALL HOUSING DIMENSIONS, SEE RESPECTIVE DRAWINGS FOR BOM ITEMS 1 & 8.
- CABLE ASSEMBLIES ARE PACKED IN BAGS.
- CUSTOM LENGTH CABLE ASSEMBLIES CAN BE PRODUCED FROM 60mm TO 9999mm.



www.harwin.com
technical@harwin.com

THIS DRAWING AND ANY INFORMATION OR DESCRIPTIVE MATTER SET OUT HEREON ARE CONFIDENTIAL AND COPYRIGHT PROPERTY OF THE HARWIN GROUP AND MUST NOT BE DISCLOSED, LOANED, COPIED OR USED FOR MANUFACTURING, TENDERING OR FOR ANY OTHER PURPOSE WITHOUT THEIR WRITTEN PERMISSION.

TOLERANCES
X. = ±1mm
X.X = ±0.50mm
X.XX = ±0.20mm
X.XXX = ±0.01mm

ANGLES = ±5°
UNLESS STATED

MATERIAL:
SEE ABOVE

FINISH: SEE ABOVE

S/AREA: mm²

TITLE:
GECKO-MT
CABLE ASSEMBLY

DRAWING NUMBER:
G125-XCX08XX-XXXX-XXXXXX

SHT 6 OF 9

Customer Information Sheet

DRAWING No.: G125-XCX08XX-XXXX-XXXXXX

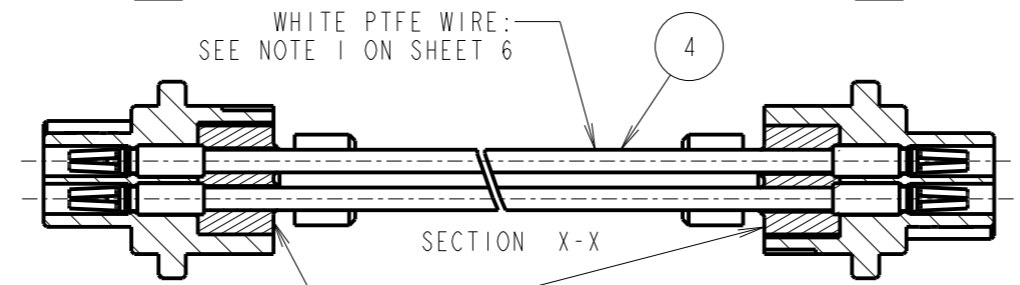
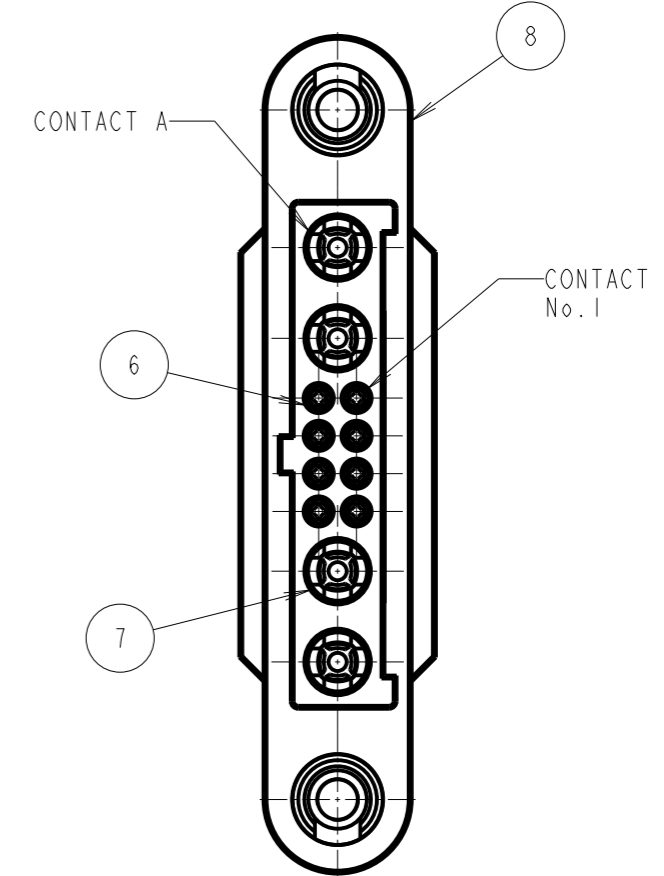
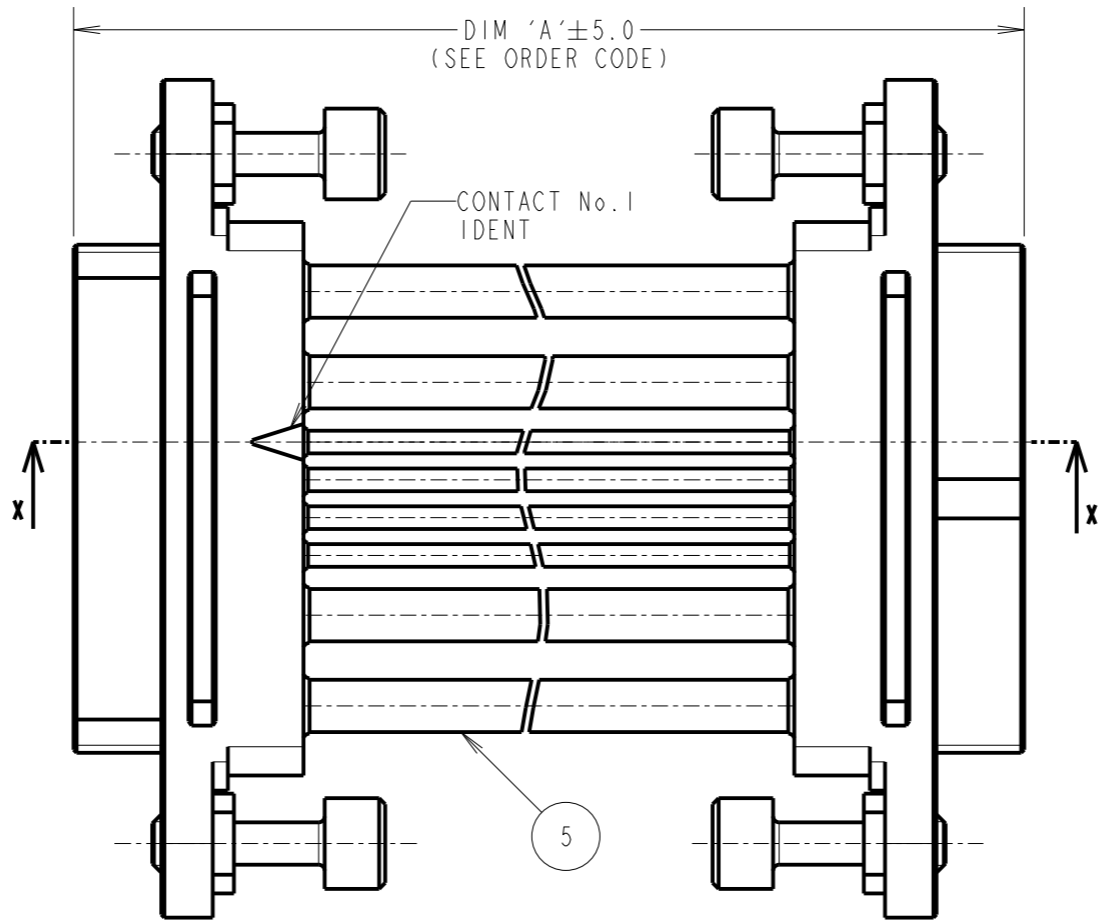
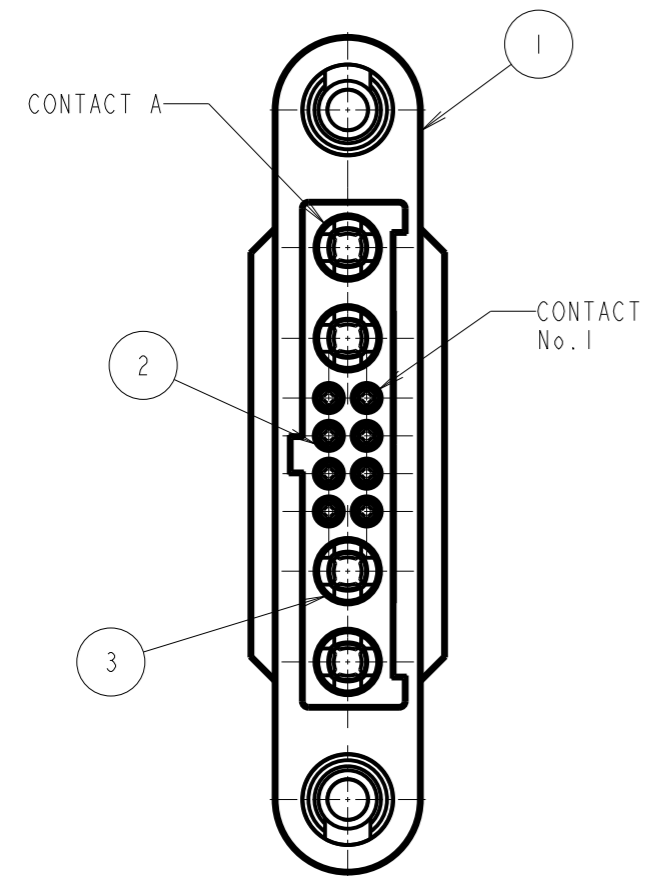
IF IN DOUBT - ASK

©

NOT TO SCALE

THIRD ANGLE PROJECTION

ALL DIMENSIONS IN mm



POTTING COMPOUND:
SEE NOTE 1 ON SHEET 6

EXAMPLE SHOWN: FEMALE-TO-FEMALE
G125-FC108FI-2B2B-XXXXFI

ORDER CODE:
G125-XCX08XX-XXXX-XXXXXX

CONNECTOR 1:	CONNECTOR 2
F = FEMALE	FIXING STYLE:
M = MALE	F1/F2/M1/M3
SIGNAL WIRE GAUGE:	DIM 'A' LENGTH:
1 = 26AWG	0060 = 60mm MIN
2 = 28AWG	9999 = 9999mm MAX
CONNECTOR 1 FIXING STYLE:	POWER CONTACTS:
F1/F2/M1/M3	1B1B/1D1D = 2 POWER CONTACTS
	2B2B/2D2D = 4 POWER CONTACTS

- NOTES:
- POSSIBLE CONFIGURATIONS:
FEMALE-TO-FEMALE,
MALE-TO-FEMALE,
MALE-TO-MALE.
 - FOR POSSIBLE COMBINATIONS, SEE BOM TABLE ON SHEET 6.
 - ASSEMBLY G125-FC108FI-2B2B-XXXXFI SHOWN FOR ILLUSTRATIVE PURPOSES ONLY. SEE ORDER CODE FOR PART NUMBER.
 - WIRING OF CONNECTOR:
CONTACT 1 TO CONTACT 1,
CONTACT 2 TO CONTACT 2,
CONTACT A TO CONTACT A,
CONTACT B TO CONTACT B, ETC.

RTP	1	07.03.23	32231
NAME	ISS.	DATE	CN/CO
APPROVED: A.BOXALL			
CHECKED: M.RUDKIN			
DRAWN: R.PORTLOCK			
CUSTOMER REF.:			
ASSEMBLY DRG:			

 www.harwin.com technical@harwin.com	THIS DRAWING AND ANY INFORMATION OR DESCRIPTIVE MATTER SET OUT HEREON ARE CONFIDENTIAL AND COPYRIGHT PROPERTY OF THE HARWIN GROUP AND MUST NOT BE DISCLOSED, LOANED, COPIED OR USED FOR MANUFACTURING, TENDERING OR FOR ANY OTHER PURPOSE WITHOUT THEIR WRITTEN PERMISSION.	TOLERANCES X. = ±1mm X.X = ±0.50mm X.XX = ±0.20mm X.XXX = ±0.01mm ANGLES = ±5° UNLESS STATED	MATERIAL: SEE SHEET 6	TITLE: GECKO-MT CABLE ASSEMBLY
			FINISH: SEE SHEET 6 S/AREA: mm ²	DRAWING NUMBER: G125-XCX08XX-XXXX-XXXXXX

Customer Information Sheet

DRAWING No.: G125-XCX08XX-XXXX-XXXXXX

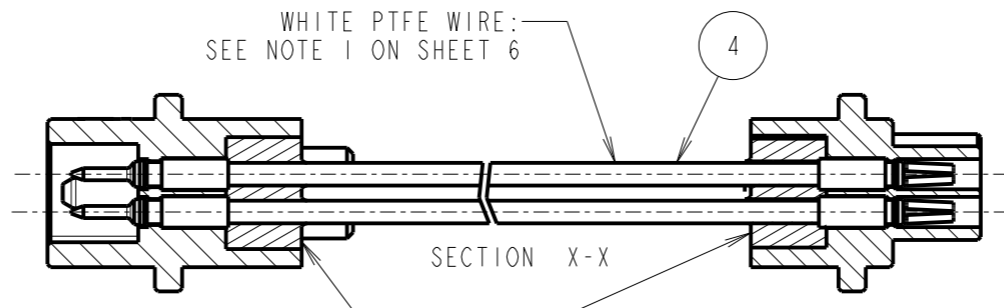
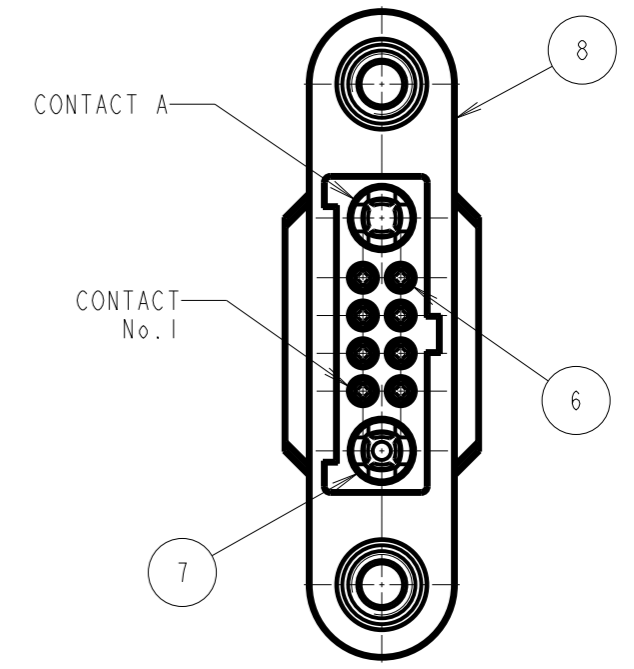
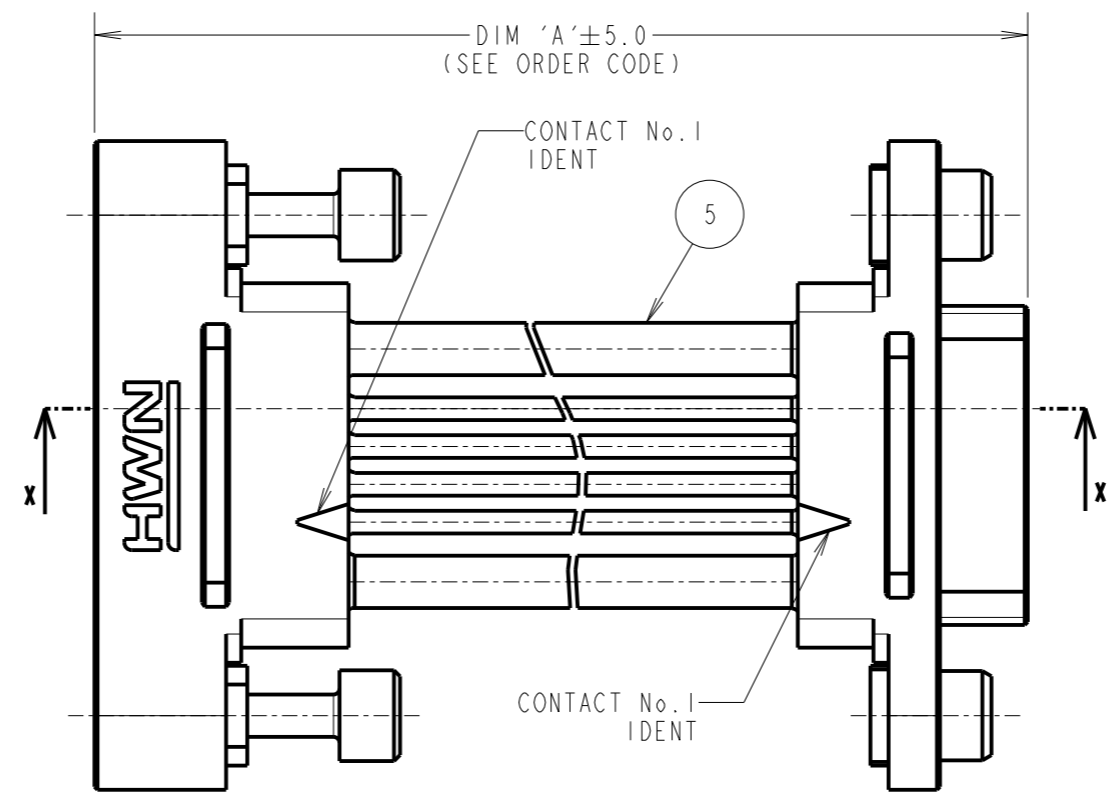
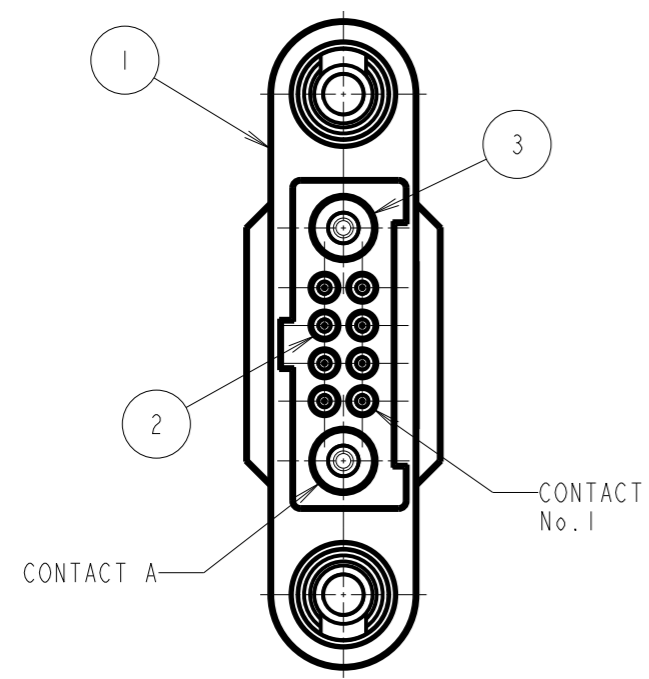
IF IN DOUBT - ASK

©

NOT TO SCALE

THIRD ANGLE PROJECTION

ALL DIMENSIONS IN mm



POTTING COMPOUND:
SEE NOTE 1 ON SHEET 6

EXAMPLE SHOWN: MALE-TO-FEMALE
G125-MC108M3-IDID-XXXXF2

ORDER CODE:
G125-XCX08XX-XXXX-XXXXXX

CONNECTOR 1:	CONNECTOR 2
F = FEMALE	FIXING STYLE:
M = MALE	F1/F2/M1/M3
SIGNAL WIRE GAUGE:	DIM 'A' LENGTH:
1 = 26AWG	0060 = 60mm MIN
2 = 28AWG	9999 = 9999mm MAX
CONNECTOR 1 FIXING STYLE:	POWER CONTACTS:
F1/F2/M1/M3	1B1B/1D1D = 2 POWER CONTACTS
	2B2B/2D2D = 4 POWER CONTACTS

- NOTES:
- POSSIBLE CONFIGURATIONS:
FEMALE-TO-FEMALE,
MALE-TO-FEMALE,
MALE-TO-MALE.
 - FOR POSSIBLE COMBINATIONS, SEE BOM TABLE ON SHEET 6.
 - ASSEMBLY G125-MC108M3-IDID-XXXXF2 SHOWN FOR ILLUSTRATIVE PURPOSES ONLY. SEE ORDER CODE FOR PART NUMBER.
 - WIRING OF CONNECTOR:
CONTACT 1 TO CONTACT 1,
CONTACT 2 TO CONTACT 2,
CONTACT A TO CONTACT A,
CONTACT B TO CONTACT B, ETC.

RTP	I	07.03.23	32231
NAME	ISS.	DATE	CN/CO
APPROVED: A.BOXALL			
CHECKED: M.RUDKIN			
DRAWN: R.PORTLOCK			
CUSTOMER REF.:			
ASSEMBLY DRG:			

 www.harwin.com technical@harwin.com	THIS DRAWING AND ANY INFORMATION OR DESCRIPTIVE MATTER SET OUT HEREON ARE CONFIDENTIAL AND COPYRIGHT PROPERTY OF THE HARWIN GROUP AND MUST NOT BE DISCLOSED, LOANED, COPIED OR USED FOR MANUFACTURING, TENDERING OR FOR ANY OTHER PURPOSE WITHOUT THEIR WRITTEN PERMISSION.	TOLERANCES X. = ±1mm X.X = ±0.50mm X.XX = ±0.20mm X.XXX = ±0.01mm ANGLES = ±5° UNLESS STATED	MATERIAL: SEE SHEET 6	TITLE: GECKO-MT CABLE ASSEMBLY
			FINISH: SEE SHEET 6 S/AREA: mm ²	DRAWING NUMBER: G125-XCX08XX-XXXX-XXXXXX

Customer Information Sheet

DRAWING No.: G125-XXXXX05XX-XXXXXX

IF IN DOUBT - ASK

©

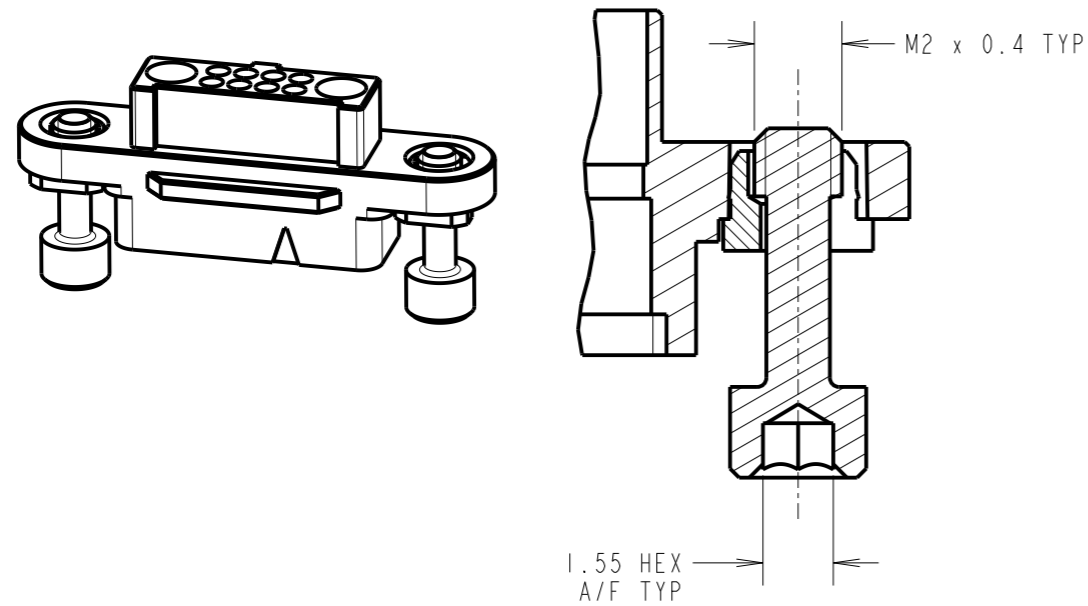
NOT TO SCALE

THIRD ANGLE PROJECTION

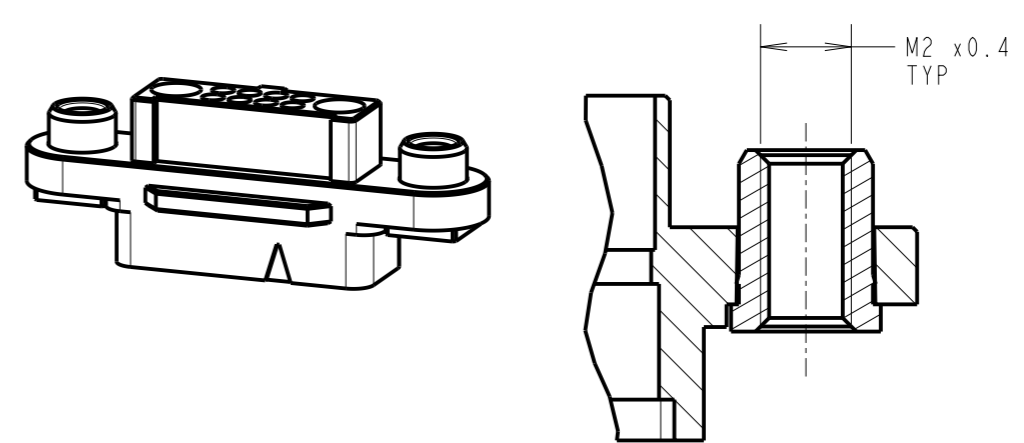
ALL DIMENSIONS IN mm

FIXING STYLES

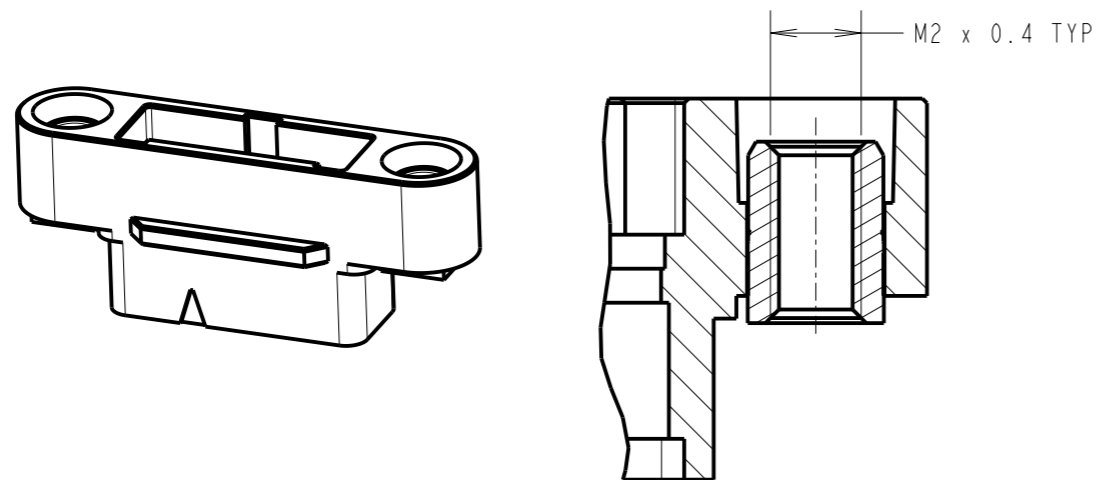
F1
EXAMPLE: G125-22496F1-01-08-01



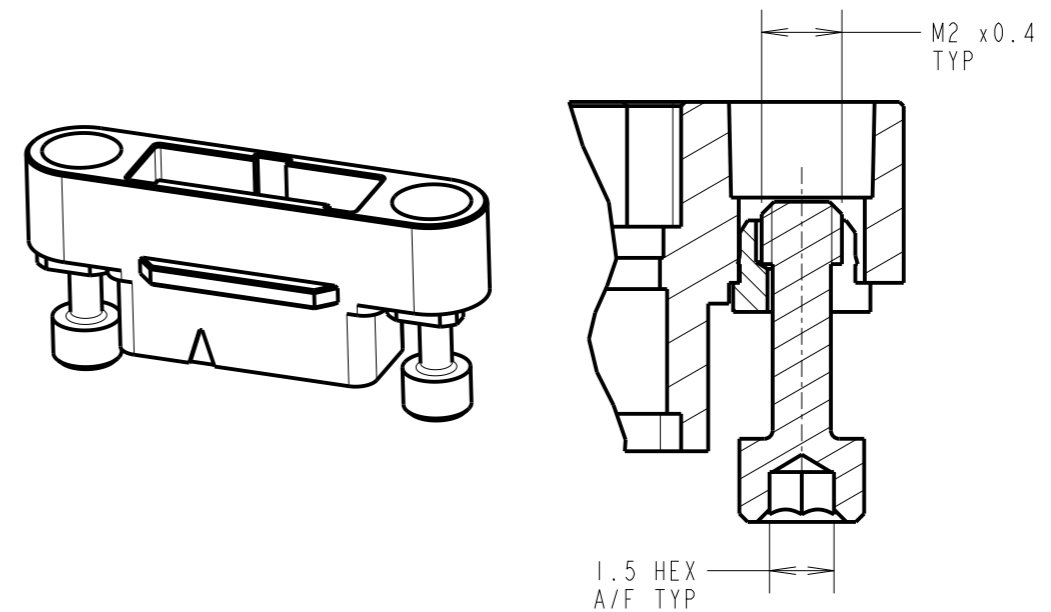
F2
EXAMPLE: G125-22496F2-01-08-01



M1
EXAMPLE: G125-32496M1-01-08-01



M3
EXAMPLE: G125-32496M3-01-08-01



RTP	I	07.03.23	32231
NAME	ISS.	DATE	CN/CO
APPROVED: A.BOXALL			
CHECKED: M.RUDKIN			
DRAWN: R.PORTLOCK			
CUSTOMER REF.:			
ASSEMBLY DRG:			

NOTES:
14. SEE BILL OF MATERIALS TABLE ON SHEET 6 AND ORDER CODE FOR FIXING IDENTIFICATION.

HARWIN

www.harwin.com
technical@harwin.com

THIS DRAWING AND ANY INFORMATION OR DESCRIPTIVE MATTER SET OUT HEREON ARE CONFIDENTIAL AND COPYRIGHT PROPERTY OF THE HARWIN GROUP AND MUST NOT BE DISCLOSED, LOANED, COPIED OR USED FOR MANUFACTURING, TENDERING OR FOR ANY OTHER PURPOSE WITHOUT THEIR WRITTEN PERMISSION.

TOLERANCES
X. = ±1mm
X.X = ±0.50mm
X.XX = ±0.20mm
X.XXX = ±0.01mm
ANGLES = ±5°
UNLESS STATED

MATERIAL:
SEE SHEET 6
FINISH: SEE SHEET 6
S/AREA: mm²

TITLE:
GECKO-MT
CABLE ASSEMBLY

DRAWING NUMBER:
G125-XCX08XX-XXXX-XXXXXX

SHT
9
OF
9