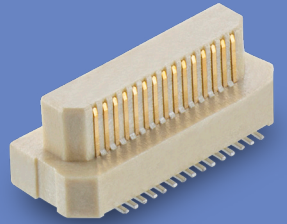
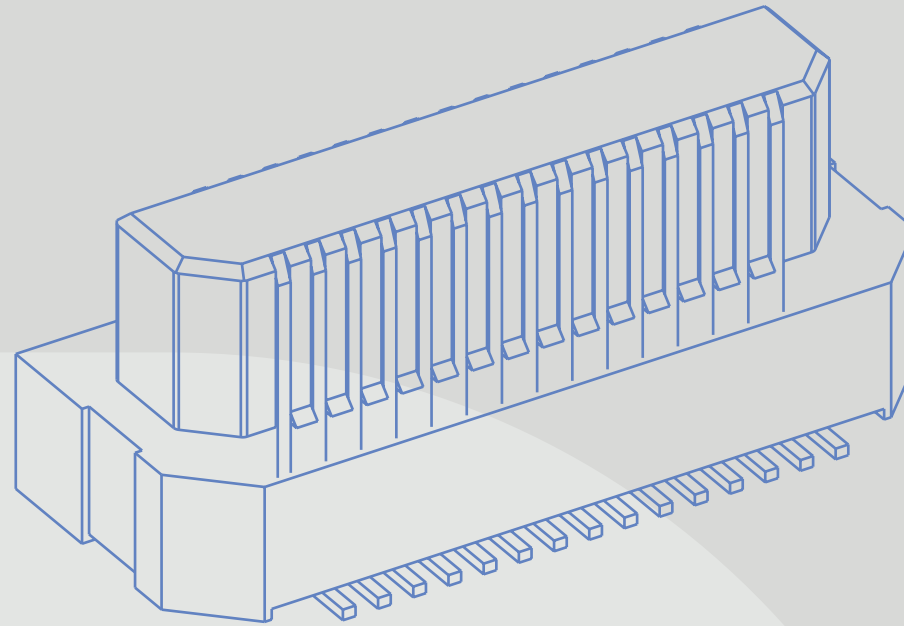


HARWIN

CONNECT TECHNOLOGY
WITH CONFIDENCE



DEPENDABLE
CONNECTIVITY
ACROSS THE BOARD

ARCHER HIGH SPEED CONNECTORS

COMPACT HIGH PIN COUNT MEZZANINE CONNECTORS

BBi
RANGE

HARWIN

ARCHER

BBi CONNECTORS FROM HARWIN.

Compact High Pin Count Mezzanine Connectors

Capable industrial-grade connection for high-speed communications. Minimum PCB real estate, polarized and protected for automated manufacturing and fault-free assembly.

Archer .8 is a miniature connection system for high-speed data rates up to 12GHz or 24Gb/s based on 0.8mm (.0315") Pitch.

Archer .5 is based on a smaller pitch of 0.5mm (.0197"), achieving data rates up to 8GHz or 16Gb/s.

The board-to-board designs are great for mezzanine daughterboard to motherboard signal transfer with high contact density. Gull-wing SMT terminations allow easy solder inspection.

Up to 120 contacts in a double-row layout. Polarized housings assist with error-free assembly, fully shrouded when mated to protect against accidental damage. Simple to use, easy mating and disconnection for replaceable modules.

The connectors use modern resilient materials, future-proofed for a long life: Halogen-free, RoHS compliant and free of REACH SVHC materials.

FEATURES

- High speed connectivity for signal/data transfer in industrial applications
- Polarized housings for error-free assembly
- Supplied in tape & reel for high volume surface mount assembly

APPLICATIONS

- Embedded computing
- Building automation
- Smart metering
- IOT modules



VIEW FULL SERIES FOR ARCHER .5 [HERE](#)



VIEW FULL SERIES FOR ARCHER .8 [HERE](#)

ARCHER

SPECIFICATIONS

MATERIALS	ELECTRICAL	MECHANICAL	ENVIRONMENTAL
Housings: High Temperature Thermoplastic, UL94V-0	Current: 0.5A max per contact	Durability: 30 mating cycles	Operating temperature: -55°C to +85°C for Archer .5 -40°C to +125°C for Archer .8
	Working voltage: 100V AC/DC	Insertion force (per contact): 1N max	
Contacts: Phosphor Bronze	Maximum voltage: 150V AC for Archer .5 500V AC for Archer .8	Withdrawal force (per contact): 0.1N min	Vibration resistance: 10-55Hz, 1.5mm pk-pk for 6 hrs
	Data rate: 8GHz, 16Gb/s for Archer .5 12GHz, 24Gb/s for Archer .8	Pitch: 0.5mm for Archer .5 0.8mm for Archer .8	
Contact Finish: Gold on contact area, Tin on termination	Insulation resistance: 1,000MΩ min at maximum voltage	Board-to-Board height: 8mm for Archer .5 5mm for Archer .8	Shock resistance: 50G (490m/s²)
			Compliance: RoHS Compliant Halogen-Free REACH / CMRT statements

Specifications are subject to change.



VIEW FULL SERIES FOR ARCHER .5 [HERE](#)



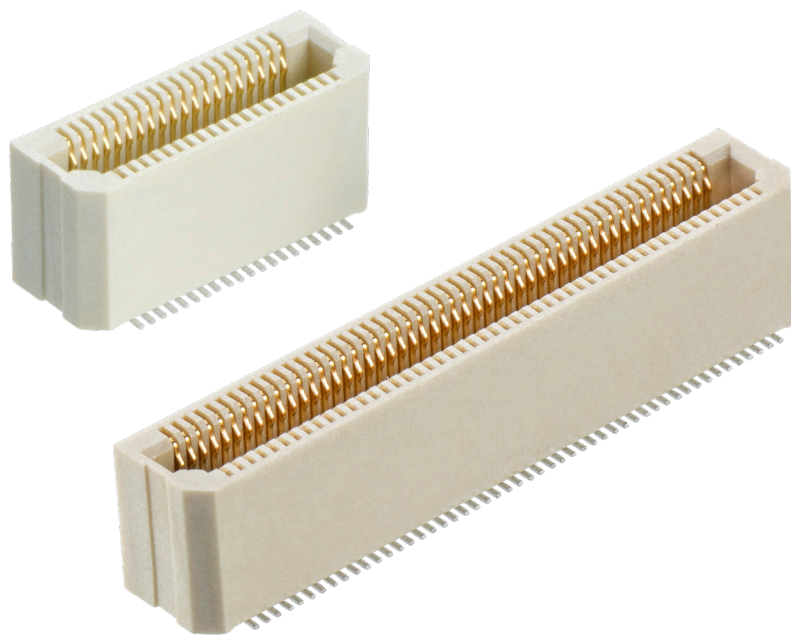
VIEW FULL SERIES FOR ARCHER .8 [HERE](#)

ARCHER

PRODUCT CATEGORIES

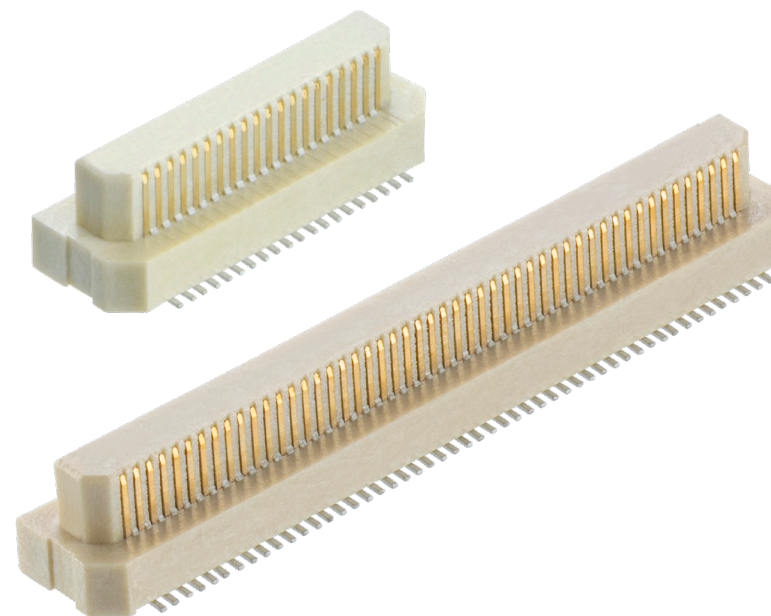
Archer .5 Female SMT Connectors

Fully shrouded single beam spring contacts. Polarized housing design enables easy mating. No disposable caps required; pick and place zones for vacuum pick-up on the connectors. Supplied in Tape and Reel ready for automated placement.



Archer .5 Male SMT Connectors

Single beam fixed contacts, polarized housing design. Supplied in Tape and Reel ready for automated placement, with pick and place zones for vacuum pick-up on the connectors – no disposable caps required.



Specifications are subject to change.



VIEW FULL SERIES & SPECIFICATIONS [HERE](#)

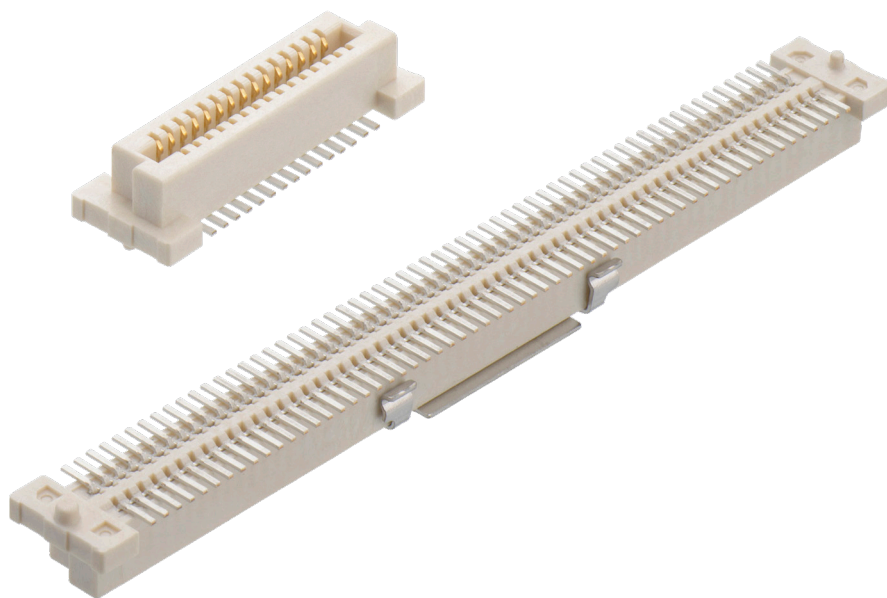


ARCHER

PRODUCT CATEGORIES

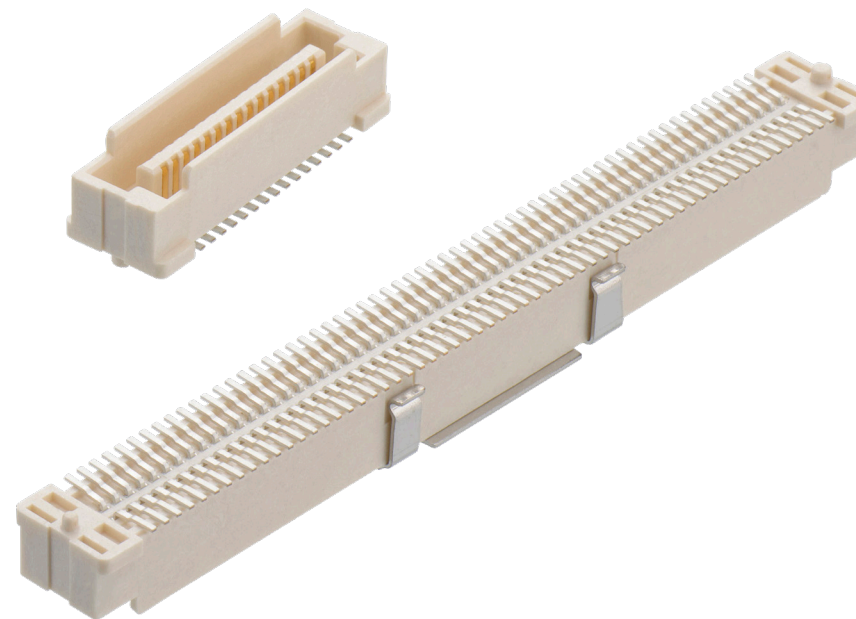
Archer .8 Female SMT Connectors

Fully shrouded single beam spring contacts, polarized housing design. Supplied in Tape and Reel ready for automated placement, with pick and place caps fitted. Location pegs to assist with SMT soldering alignment.



Archer .8 Male SMT Connectors

Fully shrouded single beam fixed contacts. Location pegs assist with SMT soldering alignment, and polarized housing design enables easy mating. Supplied in Tape and Reel ready for automated placement, with pick and place caps fitted.



Specifications are subject to change.

ARCHER

DOWNLOADS

Technical Documents

Archer .5 Component Specification [↗](#)

Archer .8 Component Specification [↗](#)

Product Training

Product Training Module (PTM) [↗](#)

Test Reports

HT084 – Archer .5 (M58 Series) General Testing [↗](#)

HT080 – Archer .8 (M58 Series) General Testing [↗](#)

Specifications are subject to change.



[VIEW FULL SERIES FOR ARCHER .5 **HERE**](#) [↗](#)

[VIEW FULL SERIES FOR ARCHER .8 **HERE**](#) [↗](#)

HARWIN

CONNECT TECHNOLOGY
WITH CONFIDENCE



HIGH RELIABILITY
WITH SUPREME
PERFORMANCE



DEPENDABLE
CONNECTIVITY
ACROSS THE BOARD



INNOVATIVE
DESIGNS FOR
EASY ASSEMBLY

HRI
RANGE

BBi
RANGE

Ezi
RANGE

FOR FURTHER INFORMATION PLEASE CONTACT:

Europe, Middle East & Africa

E: technical@harwin.com

Americas

E: technical-us@harwin.com

Asia Pacific

E: technical-asia@harwin.com

// WWW.HARWIN.COM