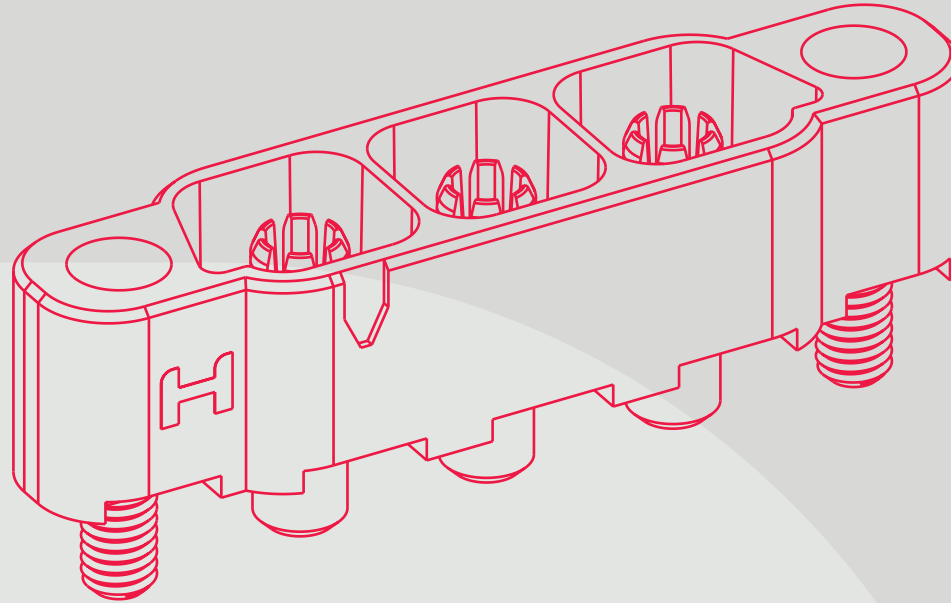


HARWIN

CONNECT TECHNOLOGY
WITH CONFIDENCE



HIGH RELIABILITY
WITH SUPREME
PERFORMANCE

KONA[®]

HIGH RELIABILITY HIGH CURRENT

MAXIMUM POWER CONNECTORS

HRI
RANGE

HARWIN



HRI CONNECTORS FROM HARWIN.

Maximum Power Connections for SWaP-C Optimization

For applications that must not fail, Kona brings high-reliability power connection at 8.50mm pitch. High current with robust housings; tough and lightweight performance under shock/vibration and temperature.

Kona contacts are fully and individually shrouded, with built-in polarization for maximum protection and minimal damage due to handling or mis-mating.

Cable-to-board and cable-to-cable; pin counts of 2, 3 and 4 at 60A per contact, for a combined power level of 240A. Maximum voltage rating of 3,000V delivered by 6-finger Beryllium copper alloy contacts. Connection integrity and good spring force achieves electrical connectivity in a variety of harsh environments.

Fit 8 AWG cable with silicone insulation, solder or crimp to straight or right-angle contacts before assembly to the

housings. Gold plating resists wear from continued use, or long-life durability in mate-and-forget operations.

Stainless steel screw-lock fixings with mate-before lock are available in both standard or reverse-fix configurations, with panel and board mount for additional security.

Cable assembly options are available from our in-house cabling experts, ready for your prototyping or production line needs.

FEATURES

- Quick mating screw fixings for reliable proven connections
- High power connection under extreme environments – vibration, shock and temperature resistance
- Low outgassing, great for space, avionics and optronics

APPLICATIONS

- Aviation and UAVs
- New Space
- Motorsport, EVs
- Defense & Security
- High-end Industrial





SPECIFICATIONS

MATERIALS	ELECTRICAL	MECHANICAL	ENVIRONMENTAL
Housings: Glass-Filled High Temperature Thermoplastic, UL94V-0	Current per contact: 60A max	Durability: 250 mating cycles	Operating temperature: -65°C to +150°C
Contacts: Copper Alloy, Gold Plating	Working voltage: 1,500V AC/DC	Insertion force (per contact): 70N max	Humidity: 90-95% RH at +40°C for 96 hours
Screw-loks: Stainless Steel	Maximum voltage: 3,000V AC	Withdrawal force (per contact): 3N min	Vibration resistance: 20G (196m/s²) for 1 hr
Metal Backshells: Aluminium Alloy	Contact resistance: 2mΩ max	Contact retention in housing: 75N min	Shock resistance: 100G (981m/s²)
	Insulation resistance: 10GΩ min	Pitch: 8.50mm	Outgassing: 0.05%TML, 0.00% CVCM
			Compliance: RoHS Compliant REACH / CMRT statements

Specifications are subject to change.

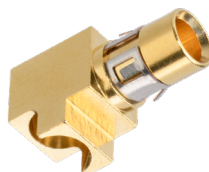
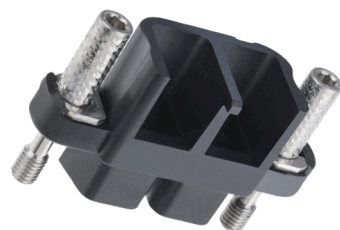




PRODUCT CATEGORIES

Cable Connector Parts

Male and female cable housings and contacts available separately. Options for either straight or right-angle cable exit, to suit any layout requirement. Jackscrews are supplied assembled to the housings. Standard gender and reverse fix options.



Cable Assemblies

Ready-to-use cabled connectors, single or double ended, fully inspected and tested. Ideal for both prototyping and full production requirements.



Tooling & Accessories

Associated products and tooling to support the Kona range.



Specifications are subject to change.



VIEW FULL SERIES & SPECIFICATIONS [HERE](#)

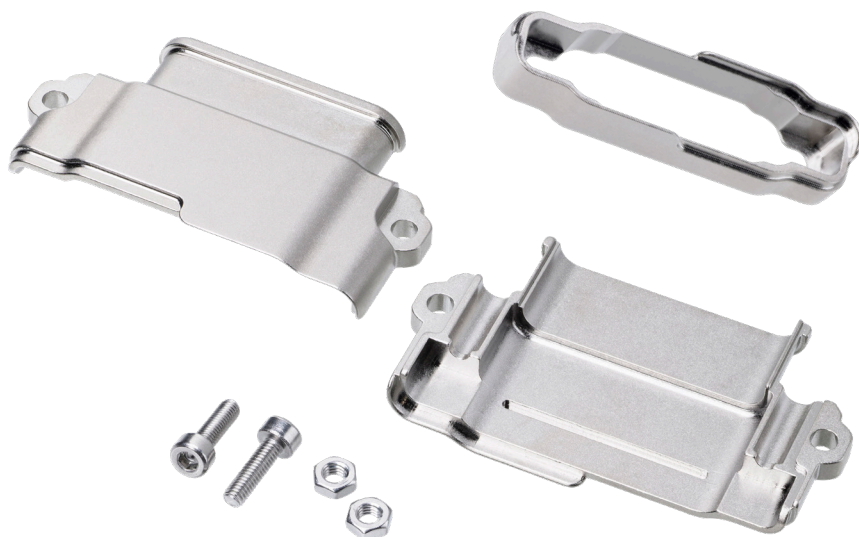




PRODUCT CATEGORIES

Backshells

Lightweight aluminium alloy backshells for cable, panel and PCB mounting. EMC shielding with metal braid and micro-band fixing, available as separate components or as completed ready-made cable assemblies. Robust hoods for long-term physical protection.



PCB Connectors

Male board-mounted connectors with board mount or reverse fix screws. Vertical and horizontal orientations. Board mount nuts available separately.



Specifications are subject to change.



VIEW FULL SERIES & SPECIFICATIONS [HERE](#)





DOWNLOADS

Technical Documents

Component Specification (including pin numbering system)



Product Training

Product Training Module (PTM)



Test Reports

HT076 – Kona General Testing



Specifications are subject to change.



VIEW FULL SERIES & SPECIFICATIONS **HERE**



HARWIN

CONNECT TECHNOLOGY
WITH CONFIDENCE



HIGH RELIABILITY
WITH SUPREME
PERFORMANCE



DEPENDABLE
CONNECTIVITY
ACROSS THE BOARD



INNOVATIVE
DESIGNS FOR
EASY ASSEMBLY

HRI
RANGE

BBi
RANGE

EZi
RANGE

FOR FURTHER INFORMATION PLEASE CONTACT:

Europe, Middle East & Africa

E: technical@harwin.com

Americas

E: technical-us@harwin.com

Asia Pacific

E: technical-asia@harwin.com

// WWW.HARWIN.COM