

Customer Information Sheet

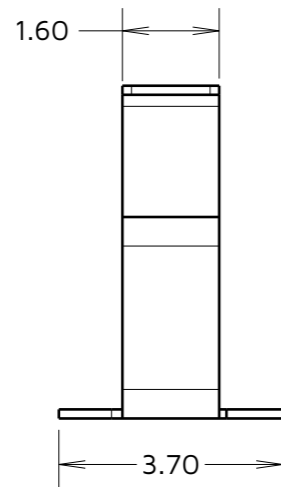
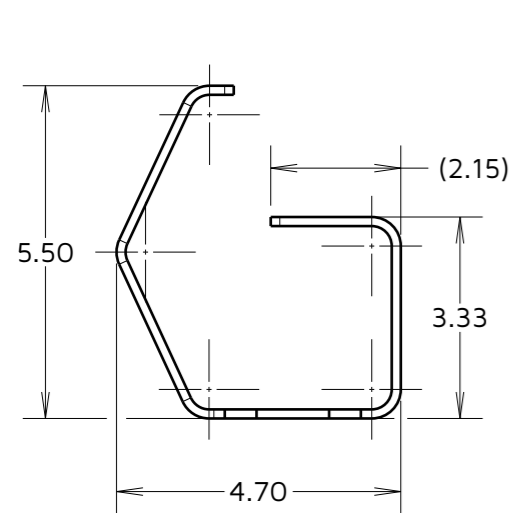
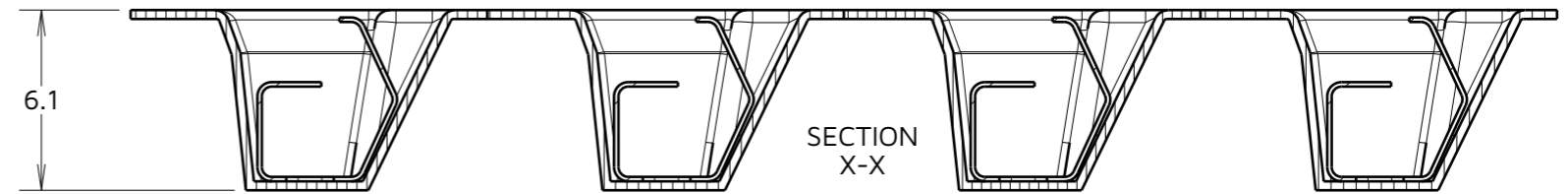
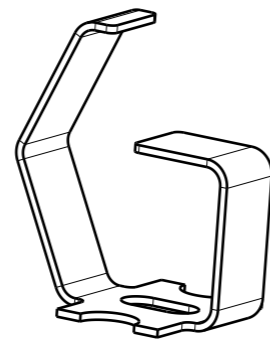
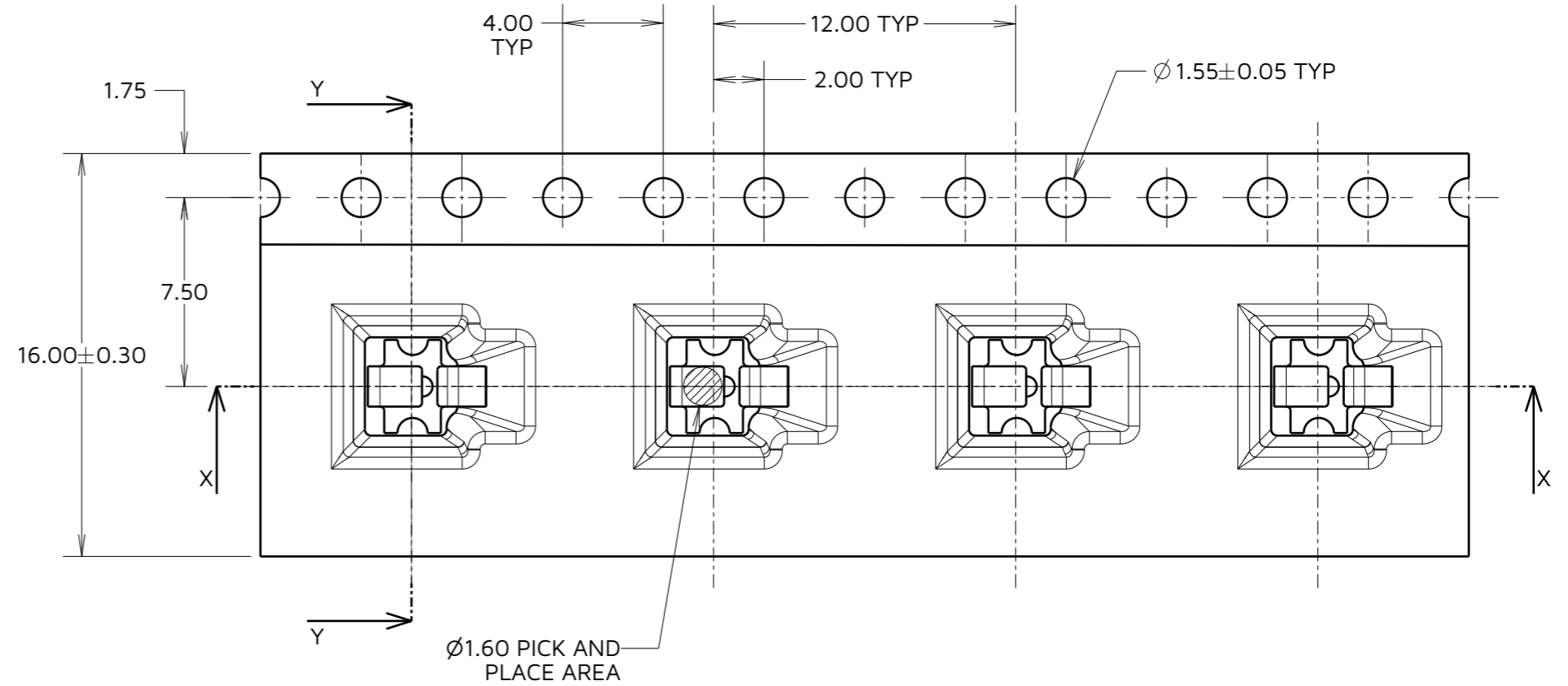
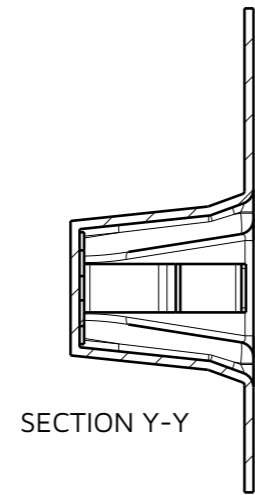
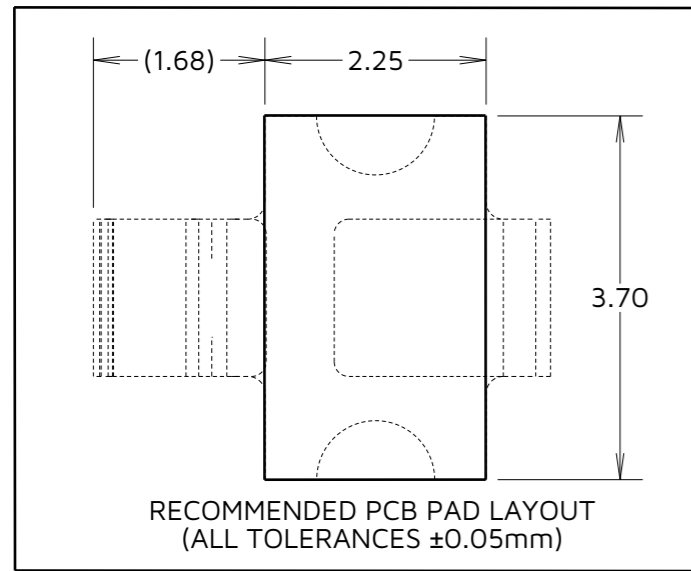
IF IN DOUBT - ASK

©

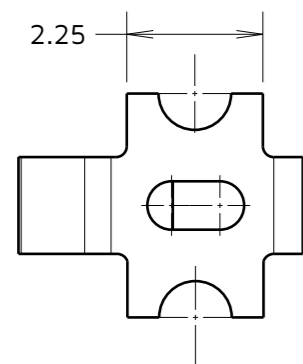
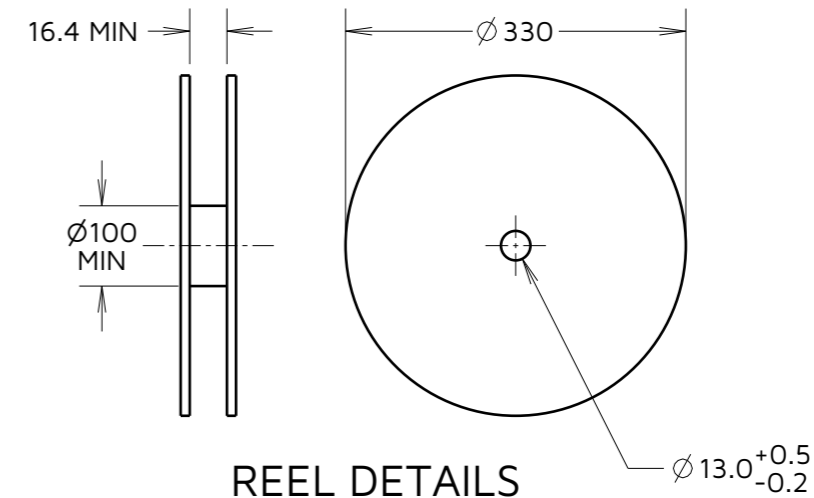
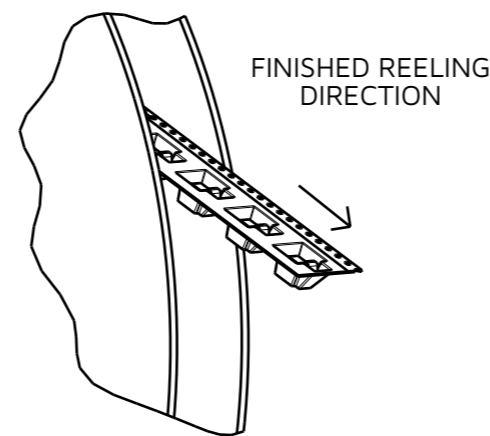
NOT TO SCALE

THIRD ANGLE PROJECTION

ALL DIMENSIONS IN mm



COMPONENT DETAILS



NOTES:

1. QUANTITY OF COMPONENTS PER REEL = 900.
2. THIS PRODUCT IS TAPED AND REELED IN ACCORDANCE WITH EIA-481 (ELECTRONICS INDUSTRIES ASSOCIATION).
3. SEE COMPONENT SPEC C055XX FOR FULL SPECIFICATION (LATEST ISSUE).
4. SEE SHEET 3 FOR RECOMMENDED DEFLECTION DIMENSIONS.

RTP	1	24.04.23	32471
NAME	ISS.	DATE	CN/CO
APPROVED:		S.BENNETT	
CHECKED:		A.BOXALL	
DRAWN:		R.PORTLOCK	
ASSEMBLY DRG:			

HARWIN

www.harwin.com

TOLERANCES
 X. = $\pm 1\text{mm}$
 X.X = $\pm 0.50\text{mm}$
 X.XX = $\pm 0.20\text{mm}$
 X.XXX = $\pm 0.01\text{mm}$
 ANGLES = $\pm 5^\circ$
 UNLESS STATED

THIS DRAWING AND ANY INFORMATION OR DESCRIPTIVE MATTER SET OUT HEREON ARE CONFIDENTIAL AND COPYRIGHT PROPERTY OF THE HARWIN GROUP AND MUST NOT BE DISCLOSED, LOANED, COPIED OR USED FOR MANUFACTURING, TENDERING OR FOR ANY OTHER PURPOSE WITHOUT THEIR WRITTEN PERMISSION.

MATERIAL:

SEE SHEET 3

TITLE:

MULTI-DIRECTIONAL SPRING CONTACT IN TAPE AND REEL

DRAWING NUMBER:

S1931-46R

SHT
2
OF
3

Customer Information Sheet

IF IN DOUBT - ASK

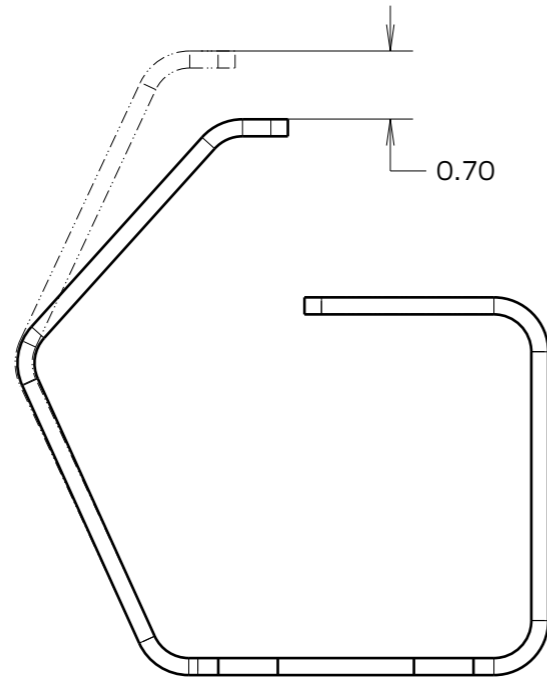


NOT TO SCALE

THIRD ANGLE PROJECTION

ALL DIMENSIONS IN mm

S1931-46R
DEFLECTION FROM ABOVE

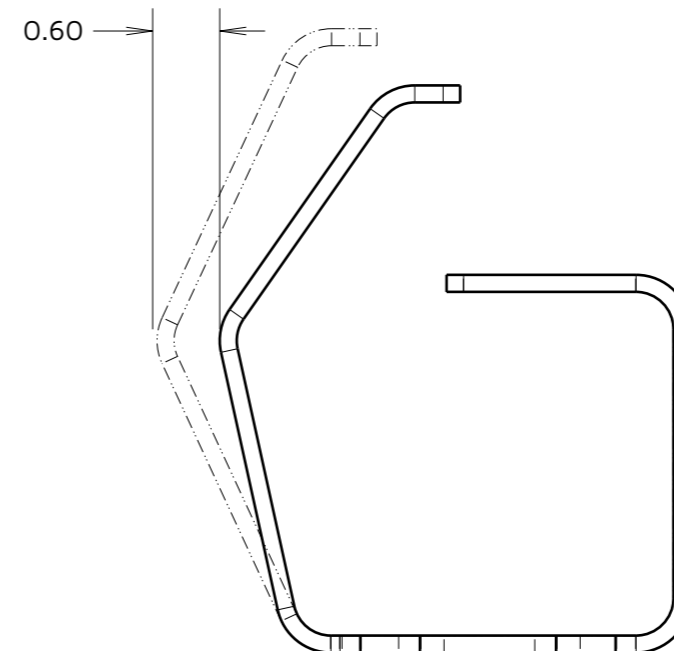


MAXIMUM RECOMMENDED HORIZONTAL
DEFLECTION = 0.70mm

MINIMUM RECOMMENDED VERTICAL
DEFLECTION = 0.20mm

MINIMUM FORCE OF 1.2N

S1931-46R
DEFLECTION FROM FRONT



MAXIMUM RECOMMENDED VERTICAL
DEFLECTION = 0.60mm

MINIMUM RECOMMENDED HORIZONTAL
DEFLECTION = 0.25mm

MINIMUM FORCE OF 1.0N

COMPONENT SPECIFICATION:
MATERIAL = CUPRO NICKEL
FINISH = 3µm 100% TIN OVER 2µm NICKEL
(SEE C055XX FOR FULL COMPONENT SPECIFICATION)

RTP	1	24.04.23	32471
NAME	ISS.	DATE	CN/CO
APPROVED:		S.BENNETT	
CHECKED:		A.BOXALL	
DRAWN:		R.PORTLOCK	
ASSEMBLY DRG:			

HARWIN

www.harwin.com

TOLERANCES
X. = ±1mm
X.X = ±0.50mm
X.XX = ±0.20mm
X.XXX = ±0.01mm
ANGLES = ±5°
UNLESS STATED

THIS DRAWING AND ANY INFORMATION OR DESCRIPTIVE MATTER SET OUT HEREON ARE CONFIDENTIAL AND COPYRIGHT PROPERTY OF THE HARWIN GROUP AND MUST NOT BE DISCLOSED, LOANED, COPIED OR USED FOR MANUFACTURING, TENDERING OR FOR ANY OTHER PURPOSE WITHOUT THEIR WRITTEN PERMISSION.

MATERIAL:

SEE ABOVE

TITLE:

MULTI-DIRECTIONAL SPRING CONTACT IN TAPE AND REEL

DRAWING NUMBER:

S1931-46R

SHT
3
OF
3