

Customer Information Sheet

IF IN DOUBT - ASK



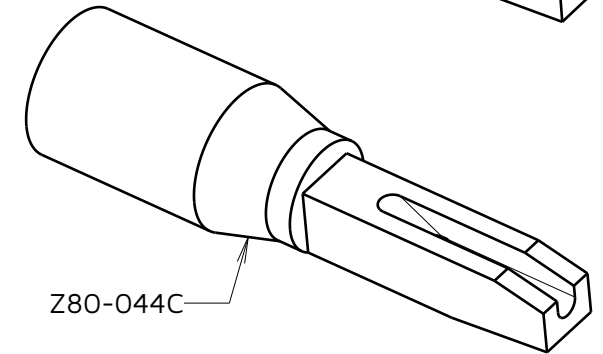
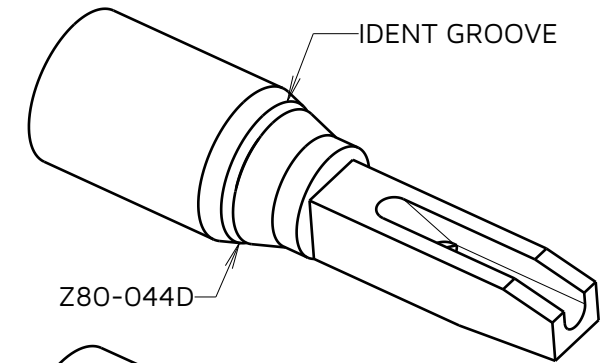
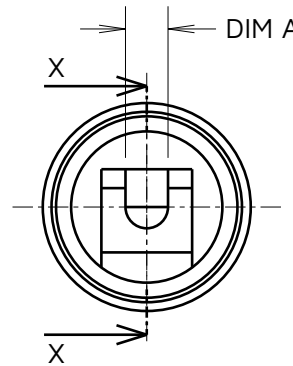
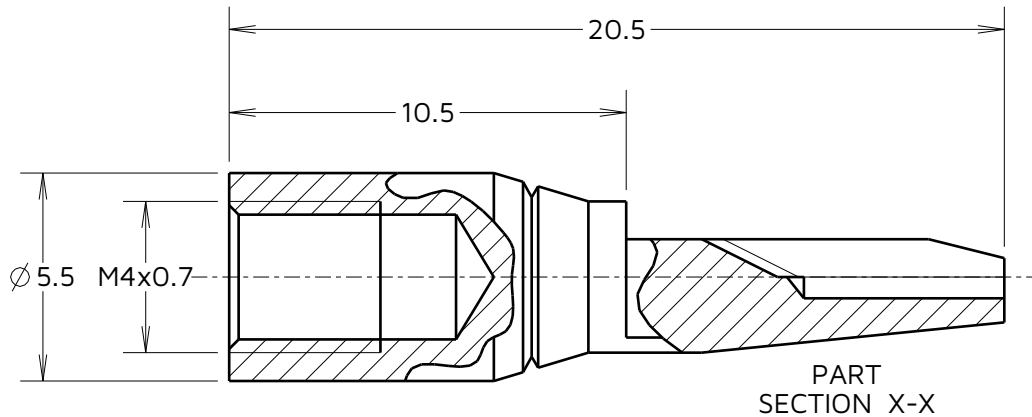
NOT TO SCALE

THIRD ANGLE PROJECTION

ALL DIMENSIONS IN mm

NOTES:

1. TIP IS SUITABLE FOR USE WITH INSERTION AND WITHDRAWAL TOOL Z80-280.
2. SEE TOOLING INSTRUCTION SHEET IS-25 FOR INSERTION AND WITHDRAWAL INSTRUCTIONS.



TOOL PART No.	COMPATIBLE CRIMP CONTACTS
Z80-044C	M80-019
	M80-925
Z80-044D	M80-011
	M80-013
	M80-040
	M80-041
	M80-206
	M80-910

PART No.	DIM 'A'	ID GROOVE	INSULATION DIAMETER
Z80-044C	0.90 MIN	NO	UP TO 0.90mm
Z80-044D	1.10 MIN	YES	FROM 0.90mm TO 1.10mm

AY	7	01.12.23	33379
NAME	ISS.	DATE	CN/CO
APPROVED:		A.YEOMANS	
CHECKED:		R.PORTLOCK	
DRAWN:		M.PERREN	
ASSEMBLY DRG:			
PART WEIGHT:		MAT'L USAGE:	

HARWIN

www.harwin.com

TOLERANCES

X. = ±1mm
 X.X = ±0.50mm
 X.XX = ±0.20mm
 X.XXX = ±0.01mm
 ANGLES = ±5°
 UNLESS STATED

THIS DRAWING AND ANY INFORMATION OR DESCRIPTIVE MATTER SET OUT HEREON ARE CONFIDENTIAL AND COPYRIGHT PROPERTY OF THE HARWIN GROUP AND MUST NOT BE DISCLOSED, LOANED, COPIED OR USED FOR MANUFACTURING, TENDERING OR FOR ANY OTHER PURPOSE WITHOUT THEIR WRITTEN PERMISSION.

MATERIAL:

STAINLESS STEEL

FINISH: CLEAN

S/AREA: mm²

TITLE:

INSERTION TOOL FOR CRIMP SOCKET CONTACT

DRAWING NUMBER:

Z80-044C & Z80-044D

SHT
2
OF 2