

Customer Information Sheet

IF IN DOUBT - ASK

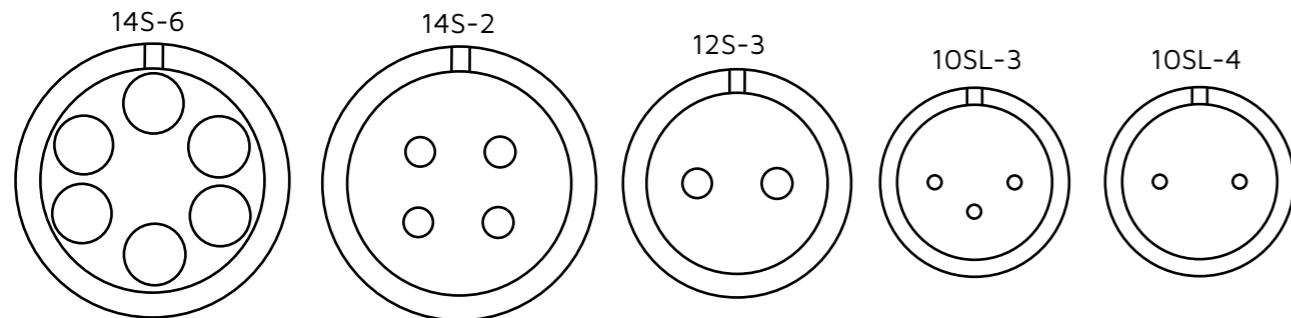
©

NOT TO SCALE

THIRD ANGLE PROJECTION

ALL DIMENSIONS IN mm

CONTACT LAYOUT (SHOWN LOOKING AT THE MATING FACE IS FOR ILLUSTRATION ONLY)

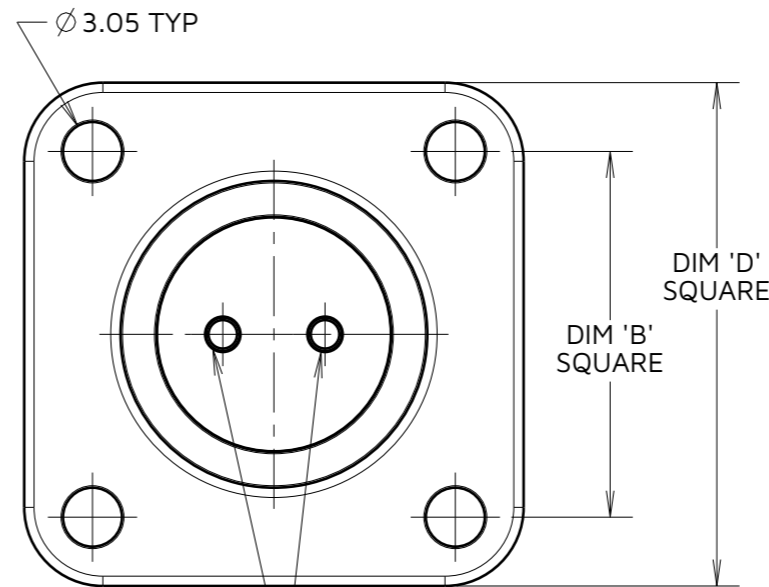
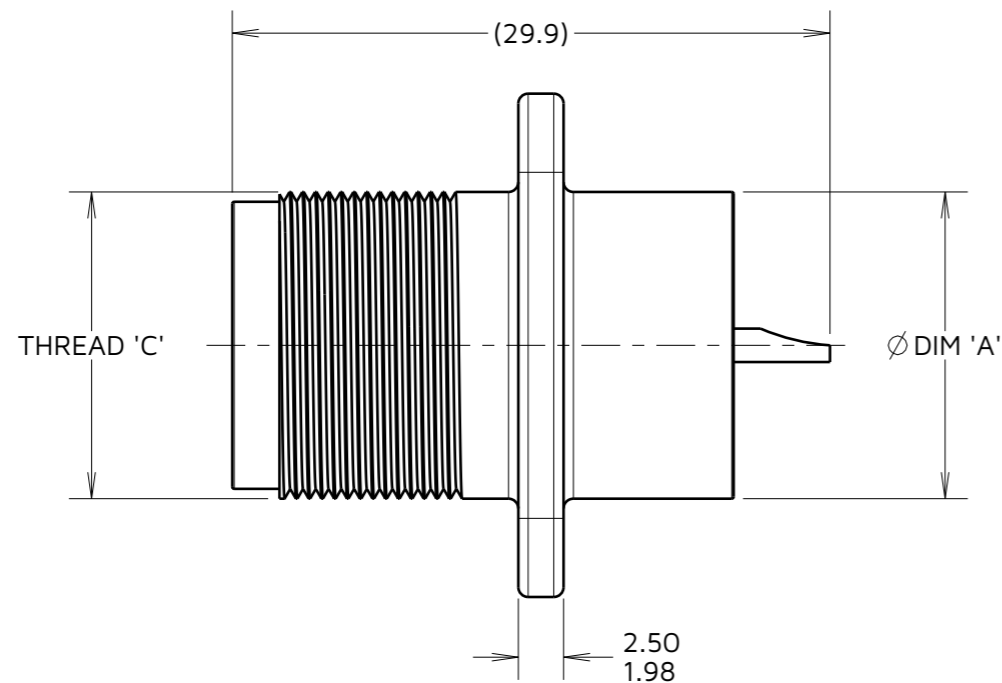


ORDER CODE:

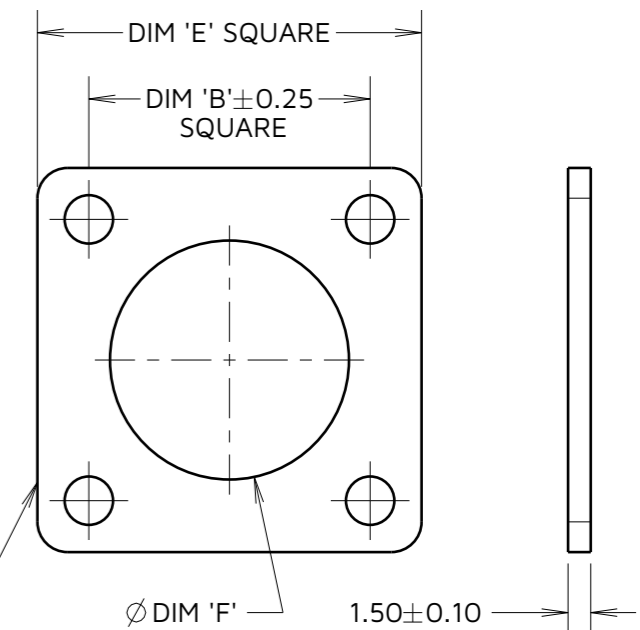
C90-3102RXXXX-XX

SHELL SIZE (CONTACT LAYOUT):
10SL-3, 10SL-4, 12S-3, 14S-2
14S-6

CONTACT GENDER:
P - MALE
S - FEMALE



CONTACT LAYOUT IS FOR ILLUSTRATION ONLY



SEALING GASKET
SEE NOTE 2

SPECIFICATIONS:

MATERIAL:
SHELL = ALUMINIUM ALLOY
INSULATOR = SYNTHETIC RUBBER
GASKET = SYNTHETIC RUBBER
CONTACT = COPPER ALLOY

FINISH:
SHELL = ZINC COBALT ALLOY, BLACK
CONTACT = SILVER
FOR MECHANICAL/ELECTRICAL REQUIREMENTS, SEE COMPONENT SPECIFICATION CO45XX (LATEST ISSUE)

NOTES:

1. PRODUCT IS RoHS COMPLIANT.
2. CONNECTOR PACKED IN BAGS, ONE CONNECTOR AND GASKET PER BAG.
3. RECOMMENDED WIRE SIZE 16-22 AWG.
4. RECOMMENDED PANEL CUT-OUT FOR SHELL SIZE 10SL & 12S = ϕ 20.62 AND FOR SHELL SIZE 14S = ϕ 23.83.
5. RECOMMENDED WIRE STRIP LENGTH = 7.5mm.

SHELL SIZE	DIM 'A' MAX	DIM 'B'	THREAD 'C'	DIM 'D'	DIM 'E' +0.4 -0.0	DIM 'F' +0.4 -0.0
10SL	ϕ 15.75	18.25	5/8-24UNEF	25.15 \pm 0.50	25.40	ϕ 15.87
12S	ϕ 17.17	20.62	3/4-20UNEF	28.02 \pm 0.13	27.80	ϕ 19.05
14S	ϕ 18.92	23.02	7/8-20UNEF	30.40 \pm 0.13	30.17	ϕ 22.22

MGP	10	20.09.23	33062
NAME	ISS.	DATE	CN/CO
APPROVED: MGP			
CHECKED: RTP			
DRAWN: R.ADDE			
ASSEMBLY DRG:			

HARWIN

www.harwin.com

TOLERANCES
X. = \pm 1mm
X.X = \pm 0.50mm
X.XX = \pm 0.20mm
X.XXX = \pm 0.01mm
ANGLES = \pm 5°
UNLESS STATED

THIS DRAWING AND ANY INFORMATION OR DESCRIPTIVE MATTER SET OUT HEREON ARE CONFIDENTIAL AND COPYRIGHT PROPERTY OF THE HARWIN GROUP AND MUST NOT BE DISCLOSED, LOANED, COPIED OR USED FOR MANUFACTURING, TENDERING OR FOR ANY OTHER PURPOSE WITHOUT THEIR WRITTEN PERMISSION.

MATERIAL:
SEE ABOVE

TITLE:
PANEL MOUNT CONNECTOR

DRAWING NUMBER:
C90-3102RXXSX-XX

SHT
2 OF 2