

Customer Information Sheet

DRAWING No.: M300-3250396M2

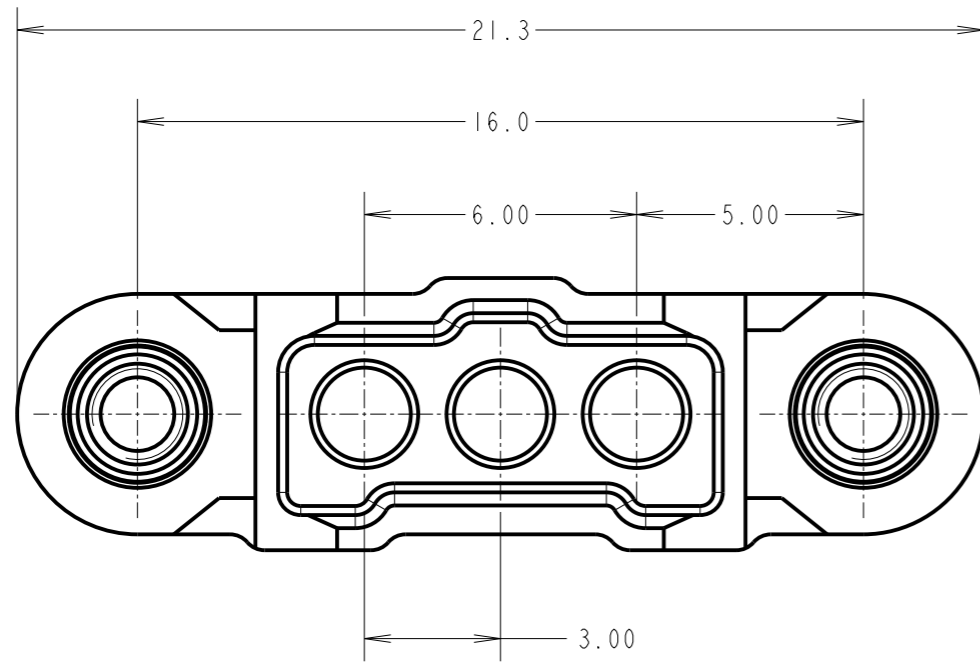
IF IN DOUBT - ASK

©

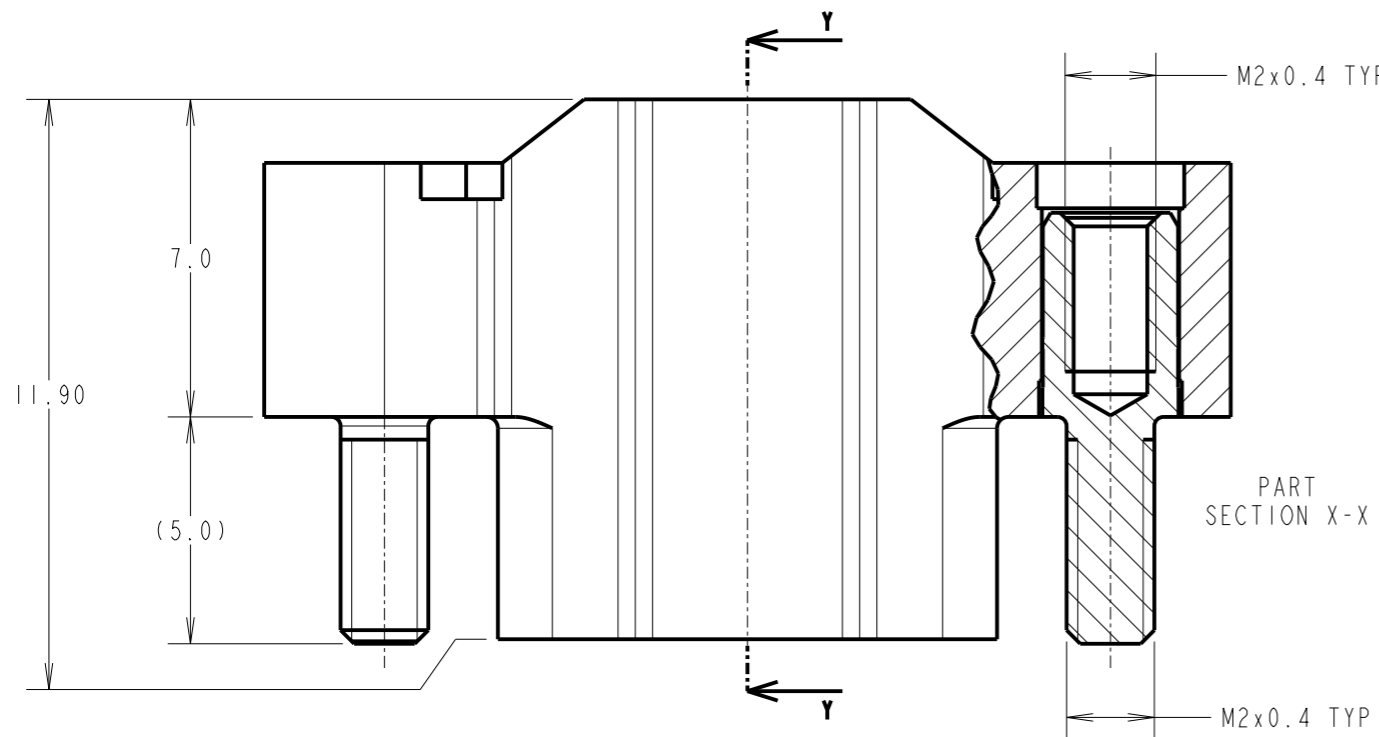
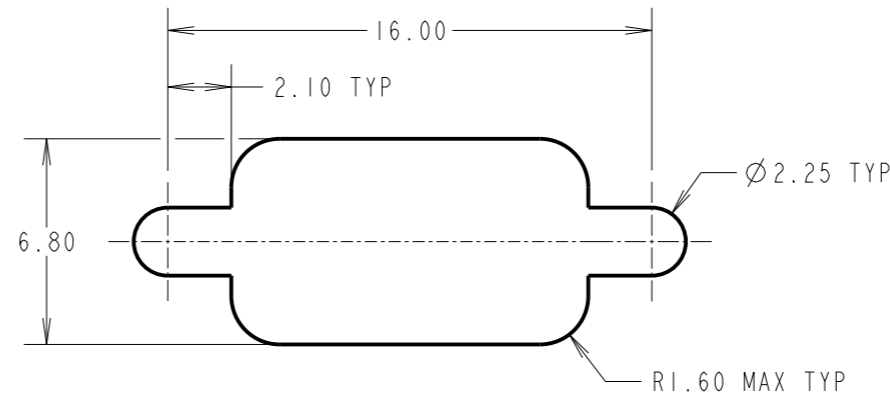
NOT TO SCALE

THIRD ANGLE PROJECTION

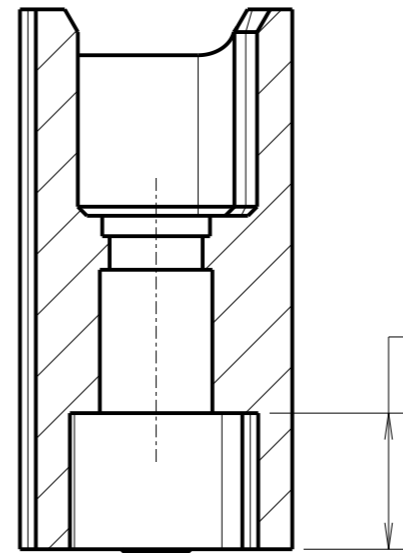
ALL DIMENSIONS IN mm



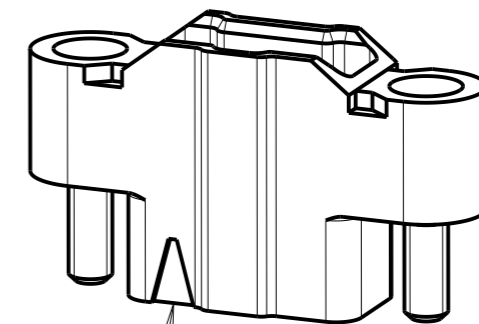
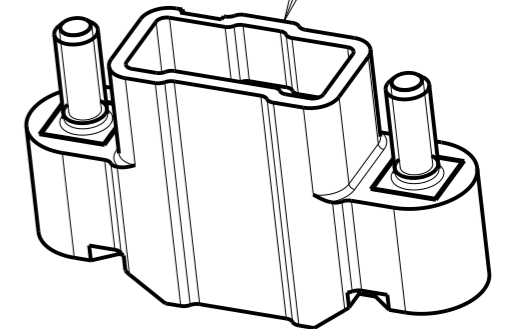
RECOMMENDED PANEL CUT OUT
(ALL TOLERANCES ± 0.05)



SECTION Y-Y



POTTING WALL



CONTACT No. 1 IDENT

RTP	2	09.12.21	31253
NAME	ISS.	DATE	CN/CO
APPROVED: R. PORTLOCK			
CHECKED: M. RUDKIN			
DRAWN: M. RUDKIN			
CUSTOMER REF.:			
ASSEMBLY DRG:			

- NOTES:
- FOR USE WITH M300-1010045 & M300-1020045 CONTACTS (NOT INCLUDED).
 - SEE COMPONENT SPECIFICATION CO48XX (LATEST ISSUE) FOR PRODUCT SPECIFICATION AND WIRING/CRIMPING ASSEMBLY INSTRUCTIONS.
 - SLOTTED NUTS M80-2130000B OR HEXAGONAL NUTS M80-2430000B FOR PANEL MOUNTING TO BE ORDERED SEPARATELY.

HARWIN

www.harwin.com
technical@harwin.com

THIS DRAWING AND ANY INFORMATION OR DESCRIPTIVE MATTER SET OUT HEREON ARE CONFIDENTIAL AND COPYRIGHT PROPERTY OF THE HARWIN GROUP AND MUST NOT BE DISCLOSED, LOANED, COPIED OR USED FOR MANUFACTURING, TENDERING OR FOR ANY OTHER PURPOSE WITHOUT THEIR WRITTEN PERMISSION.

TOLERANCES

X. = ± 1 mm
X.X = ± 0.50 mm
X.XX = ± 0.20 mm
X.XXX = ± 0.01 mm
ANGLES = $\pm 5^\circ$
UNLESS STATED

MATERIAL:

SEE ABOVE

FINISH:

SEE ABOVE

S/AREA:

mm²

TITLE: 1mm POWER CONNECTOR
SIL CRIMP HOUSING WITH
POTTING WALL MALE ASSEMBLY

DRAWING NUMBER:

M300-3250396M2

SHT
2 OF 2