

Customer Information Sheet

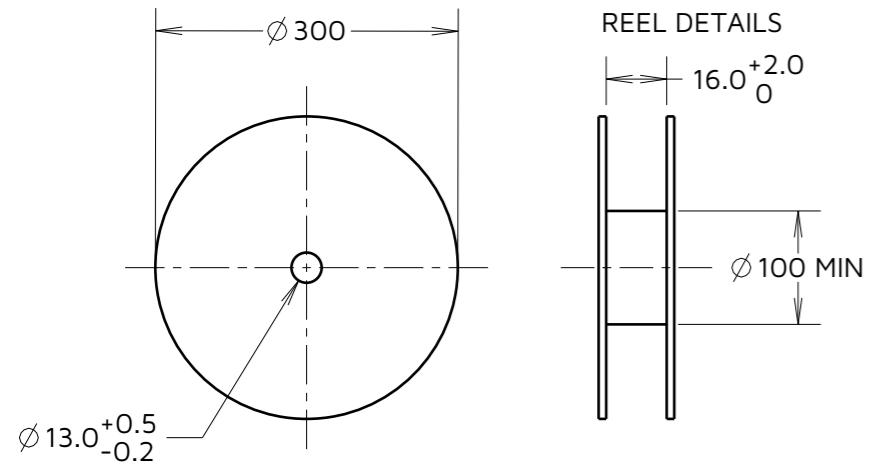
IF IN DOUBT - ASK

©

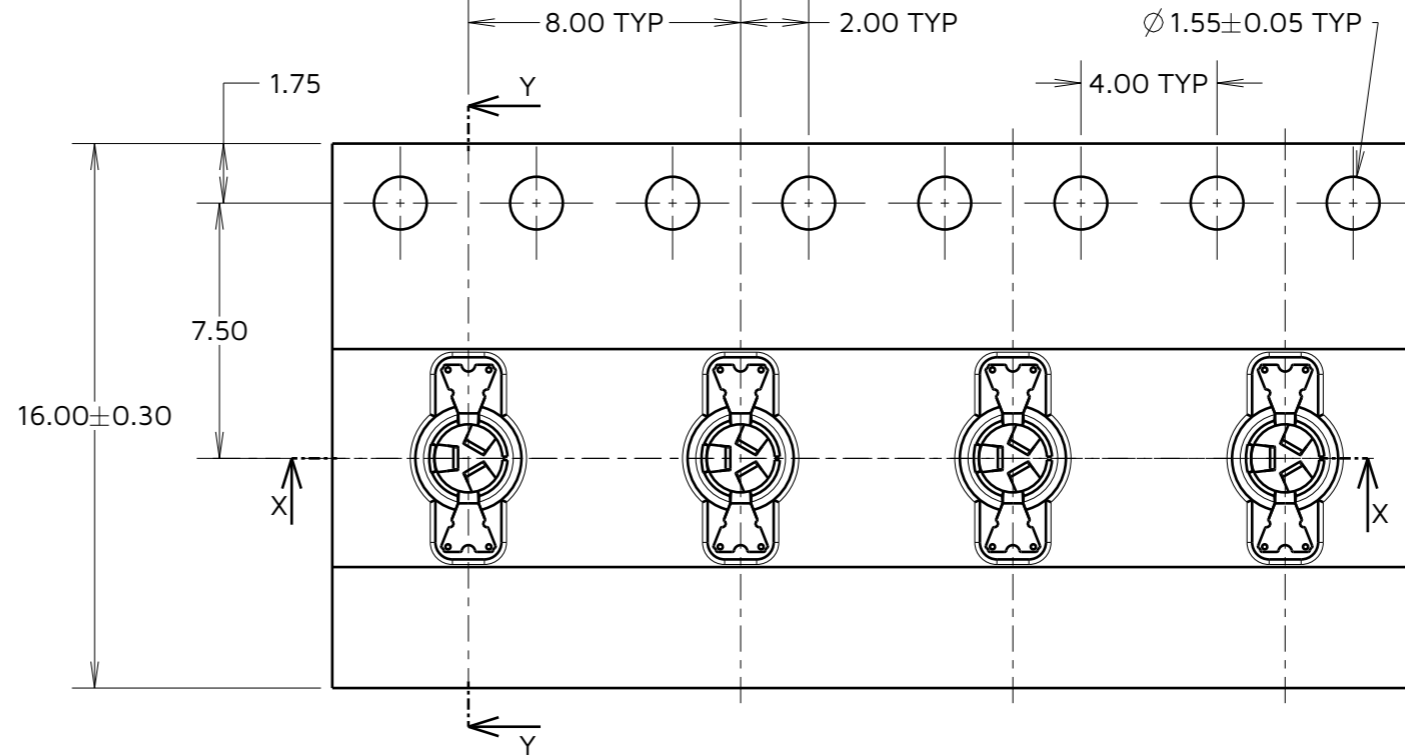
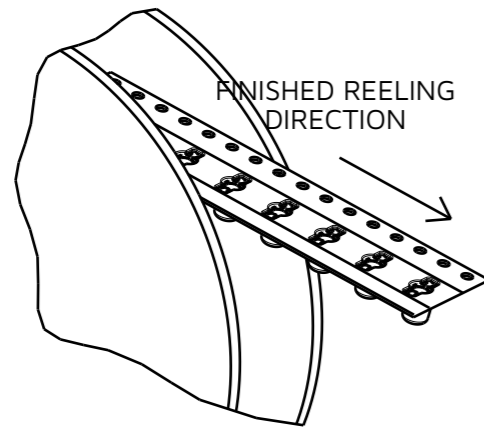
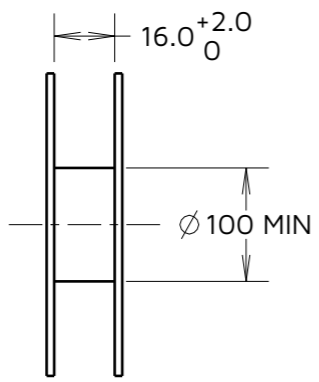
NOT TO SCALE

THIRD ANGLE PROJECTION

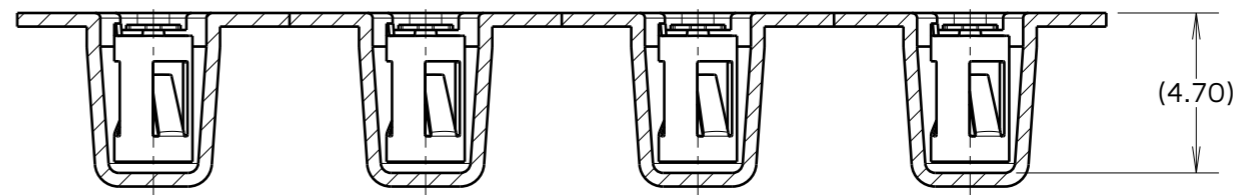
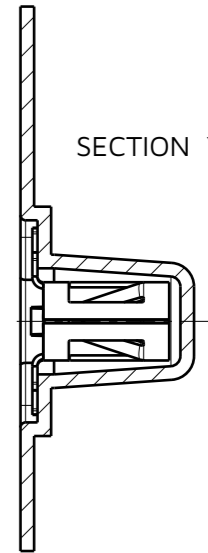
ALL DIMENSIONS IN mm



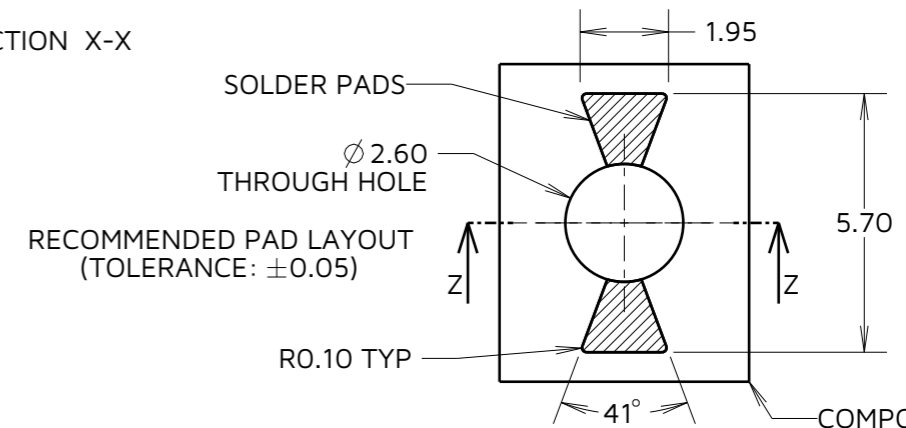
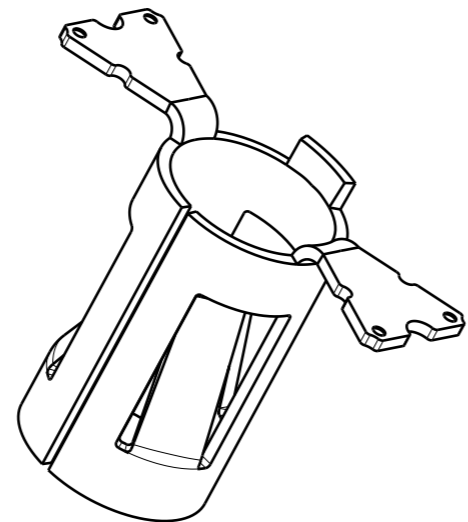
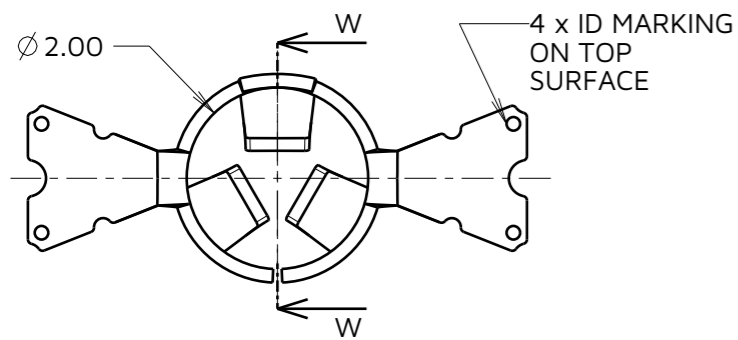
REEL DETAILS



SECTION Y-Y



SECTION X-X



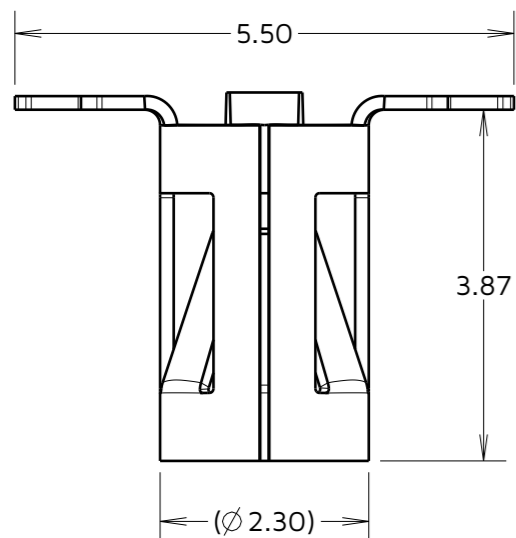
SOLDER PADS

THROUGH HOLE

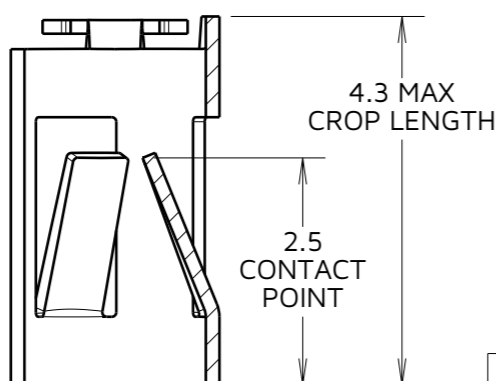
RECOMMENDED PAD LAYOUT (TOLERANCE: ± 0.05)

R0.10 TYP

COMPONENT HIDDEN FOR CLARITY



SECTION W-W



COMPONENT SPECIFICATION
 MATERIAL = BERYLLIUM COPPER
 FINISH = GOLD OVER NICKEL
 ELECTRICAL:
 CURRENT RATING = 6A
 CONTACT RESISTANCE = 15mΩ MAX
 MECHANICAL:
 MAX INSERTION FORCE:
 $\varnothing 0.80$ mm PIN = 3.0N
 $\varnothing 1.30$ mm PIN = 6.0N
 MIN WITHDRAWAL FORCE:
 $\varnothing 0.80$ mm PIN = 0.3N
 $\varnothing 1.30$ mm PIN = 0.6N
 DURABILITY = 500 CYCLES
 ENVIRONMENTAL:
 OPERATING TEMPERATURE = -50°C TO +125°C

NOTES:

1. QUANTITY OF COMPONENTS PER REEL = 1400.
2. THIS PRODUCT IS TAPED AND REELED IN GENERAL ACCORDANCE WITH EIA-481-2 (ELECTRONICS INDUSTRIES ASSOCIATION).

RTP	8	29.05.24	34137
NAME	ISS.	DATE	CN/CO
APPROVED:		R.PORTLOCK	
CHECKED:		A.YEOMANS	
DRAWN:		S.BENNETT	
ASSEMBLY DRG:			

HARWIN

www.harwin.com

TOLERANCES
 X. = ± 1 mm
 X.X = ± 0.50 mm
 X.XX = ± 0.20 mm
 X.XXX = ± 0.01 mm
 ANGLES = $\pm 5^\circ$
 UNLESS STATED

THIS DRAWING AND ANY INFORMATION OR DESCRIPTIVE MATTER SET OUT HEREON ARE CONFIDENTIAL AND COPYRIGHT PROPERTY OF THE HARWIN GROUP AND MUST NOT BE DISCLOSED, LOANED, COPIED OR USED FOR MANUFACTURING, TENDERING OR FOR ANY OTHER PURPOSE WITHOUT THEIR WRITTEN PERMISSION.

MATERIAL:
 SEE ABOVE
 SEE ABOVE

TITLE: SYCAMORE CONTACT
 $\varnothing 1.00$ mm BOTTOM ENTRY
 SOCKET IN TAPE & REEL

DRAWING NUMBER:
S9141-45R

SHT
 2 OF 2