

# Customer Information Sheet

IF IN DOUBT - ASK

©

NOT TO SCALE

THIRD ANGLE PROJECTION

ALL DIMENSIONS IN mm

ORDER CODE:

**F10-10XXXX45R**

HEIGHT:  
SEE TABLE 1

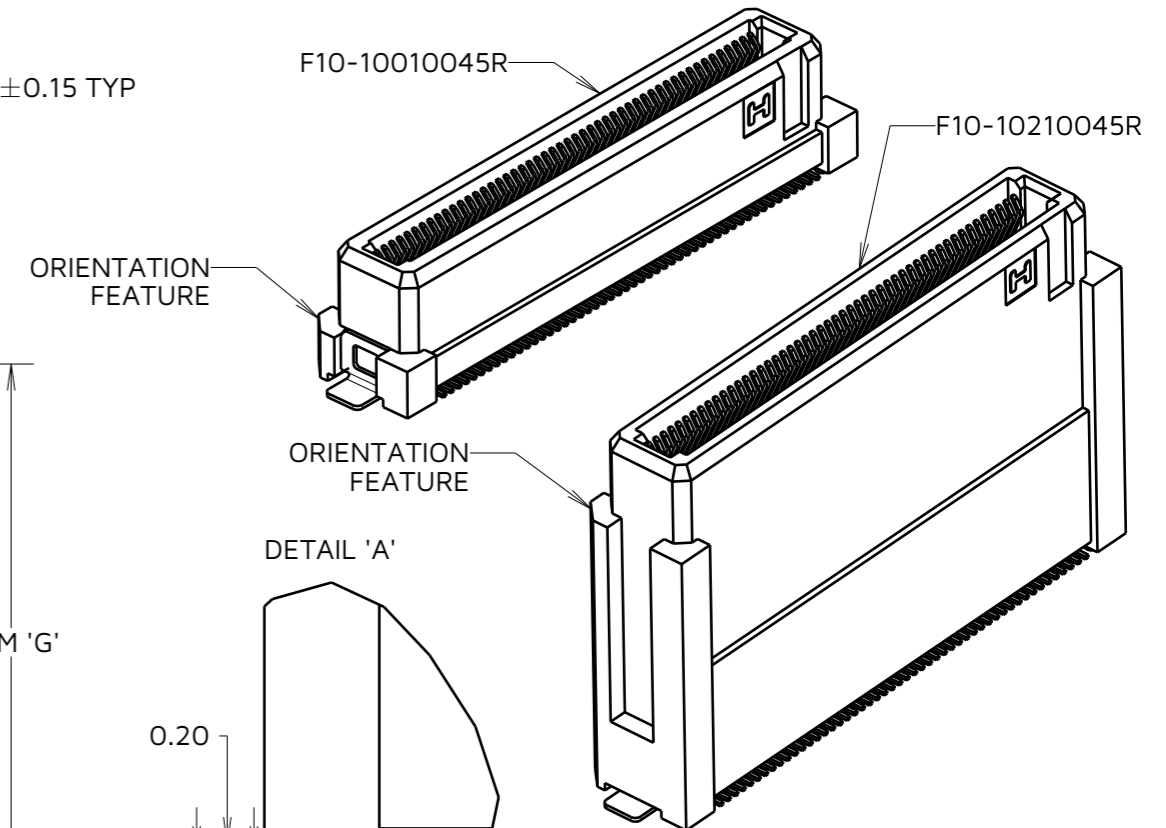
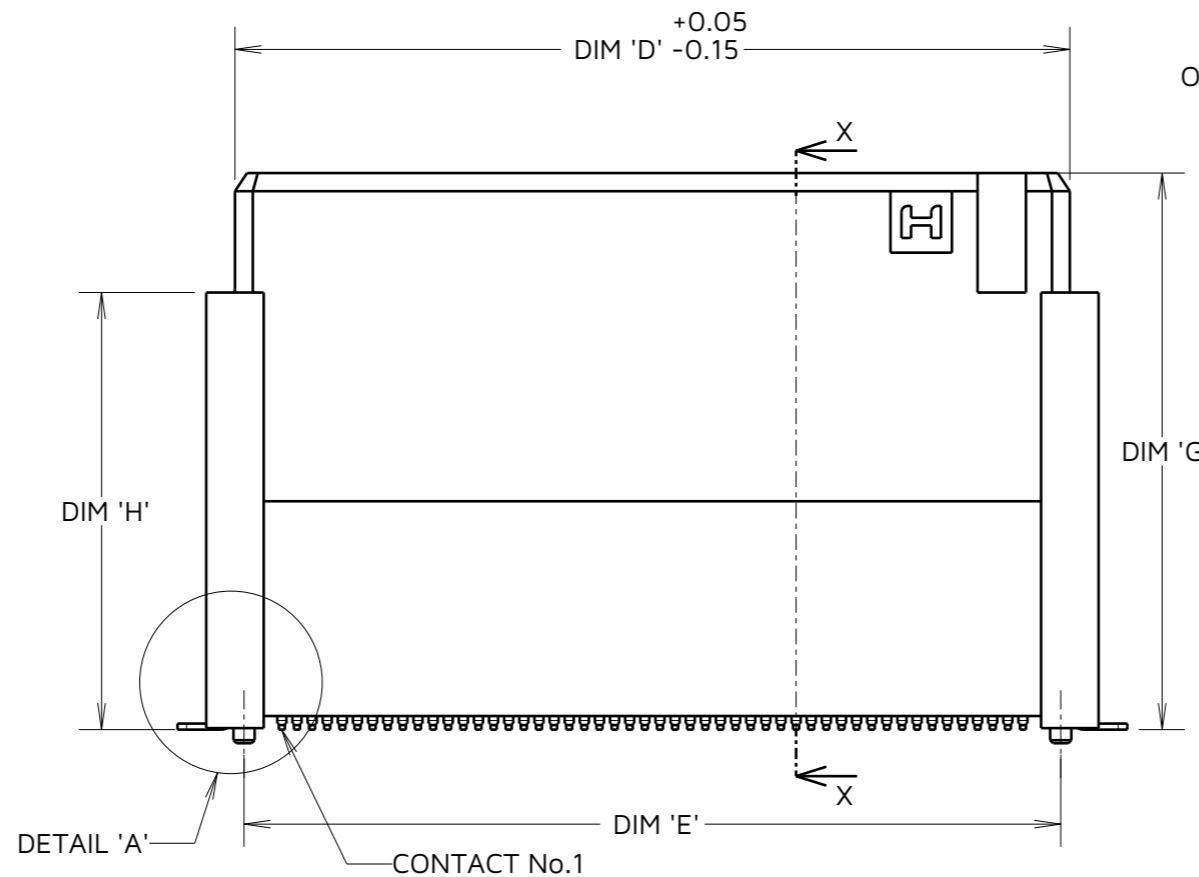
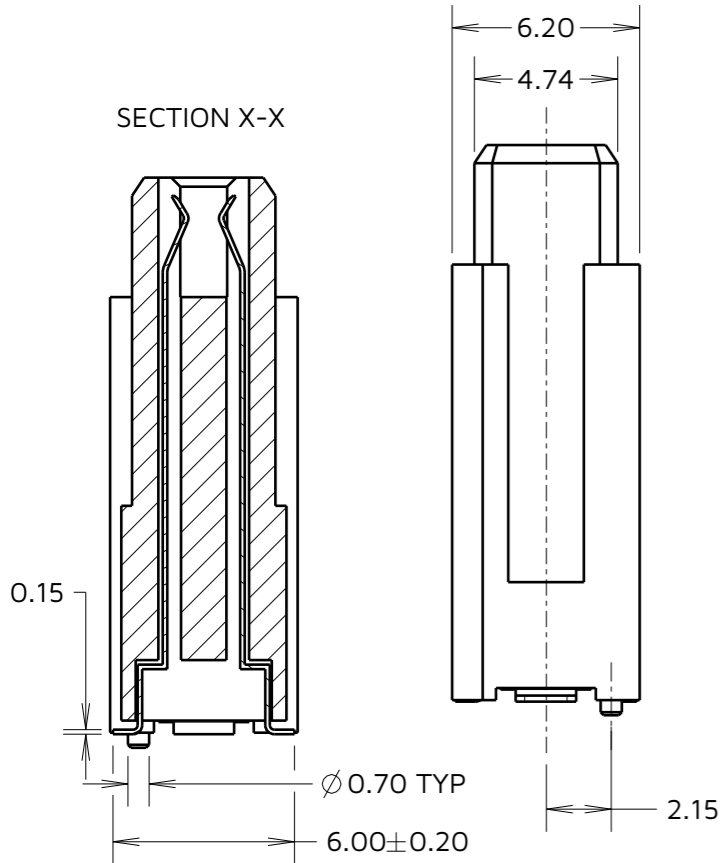
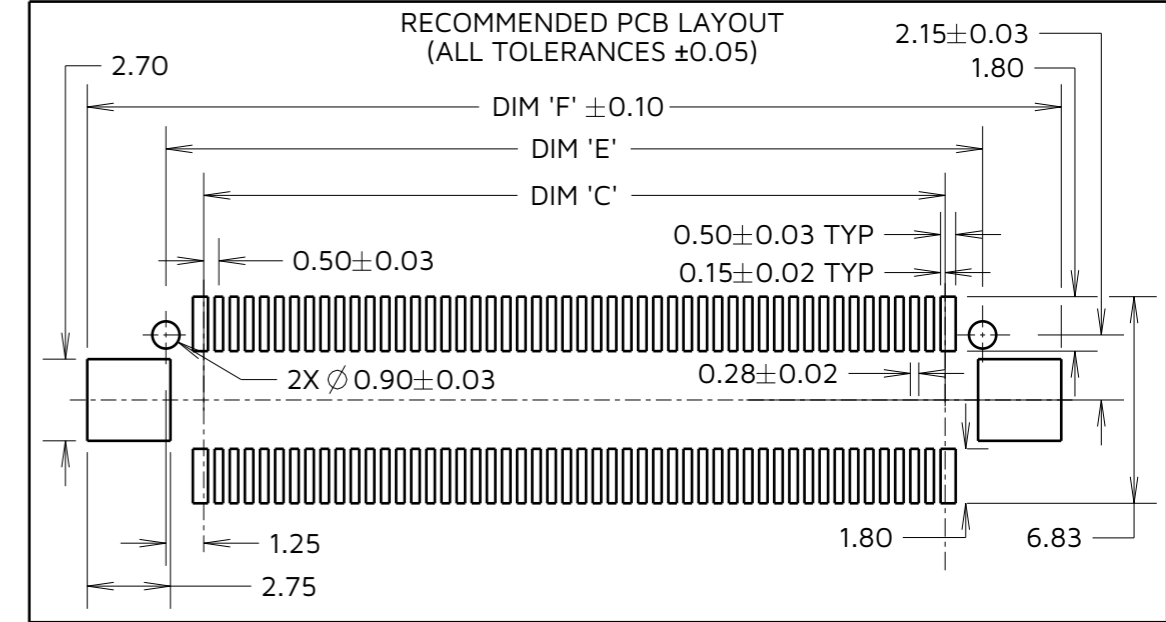
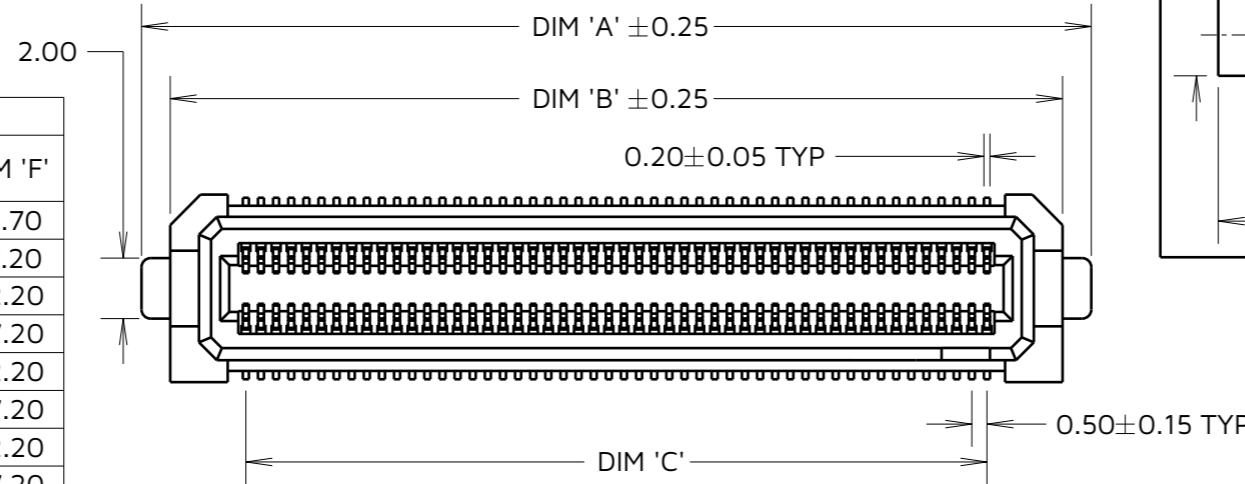
No. OF CONTACTS:  
SEE TABLES 1&2

TABLE 1: VARIANTS

PART No.	CONNECTOR HEIGHT DIM 'G'	DIM 'H'	No. OF CONTACTS							
			30	40	60	80	100	120	140	160
F10-100XXX45R	6.40	2.45	30	-	-	-	100	-	-	-
F10-101XXX45R	13.40	9.45	30	-	-	-	100	-	-	-
F10-102XXX45R	18.40	14.45	30	40	60	80	100	120	140	160

TABLE 2: DIMENSIONS

No. OF CONTACTS	DIM 'A'	DIM 'B'	DIM 'C'	DIM 'D'	DIM 'E'	DIM 'F'
30	13.90	12.00	07.00	10.10	09.50	14.70
40	16.40	14.50	09.50	12.60	12.00	17.20
60	21.40	19.50	14.50	17.60	17.00	22.20
80	26.40	24.50	19.50	22.60	22.00	27.20
100	31.40	29.50	24.50	27.60	27.00	32.20
120	36.40	34.50	29.50	32.60	32.00	37.20
140	41.40	39.50	34.50	37.60	37.00	42.20
160	46.40	44.50	39.50	42.60	42.00	47.20



TOLERANCES	
X. = ±0.30mm	X.° = ±5.0°
.X = ±0.25mm	.X° = ±3.0°
.XX = ±0.15mm	.XX° = ±2.0°
.XXX = ±0.10mm	.XXX° = ±1.0°

AB	2	30.04.24	34005
NAME	ISS.	DATE	CN/CO
APPROVED:		A.BOXALL	
CHECKED:		F.CHRISPINE	
DRAWN:		A.BOXALL	
ASSEMBLY DRG:			

- NOTES:
- SEE COMPONENT SPECIFICATION C057XX (LATEST ISSUE) FOR COMPLETE CONNECTOR SPECIFICATION.
  - PART SHOWN IS F10-10210045R SEE ORDER CODE FOR POSSIBLE CONFIGURATIONS.
  - SEE SHEET 4 FOR TAPE & REEL DETAILS.

**HARWIN**

www.harwin.com

TOLERANCES  
X. = ±1mm  
X.X = ±0.50mm  
X.XX = ±0.20mm  
X.XXX = ±0.01mm  
ANGLES = ±5°  
UNLESS STATED

THIS DRAWING AND ANY INFORMATION OR DESCRIPTIVE MATTER SET OUT HEREON ARE CONFIDENTIAL AND COPYRIGHT PROPERTY OF THE HARWIN GROUP AND MUST NOT BE DISCLOSED, LOANED, COPIED OR USED FOR MANUFACTURING, TENDERING OR FOR ANY OTHER PURPOSE WITHOUT THEIR WRITTEN PERMISSION.

MATERIAL:

SEE NOTE 1

TITLE: 0.5mm PITCH FEMALE FLECTO CONNECTOR SIGNAL CONTACTS

DRAWING NUMBER:  
**F10-10XXXX45R**

SHT  
3 OF 4

# Customer Information Sheet

IF IN DOUBT - ASK

©

NOT TO SCALE

THIRD ANGLE PROJECTION

ALL DIMENSIONS IN mm

ORDER CODE:

**F10-10XXXX45R**

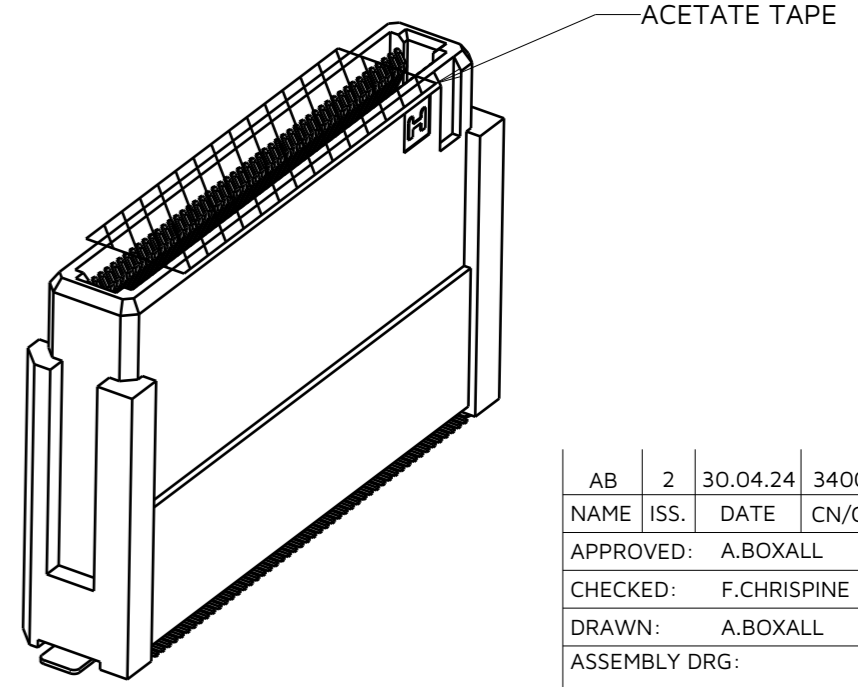
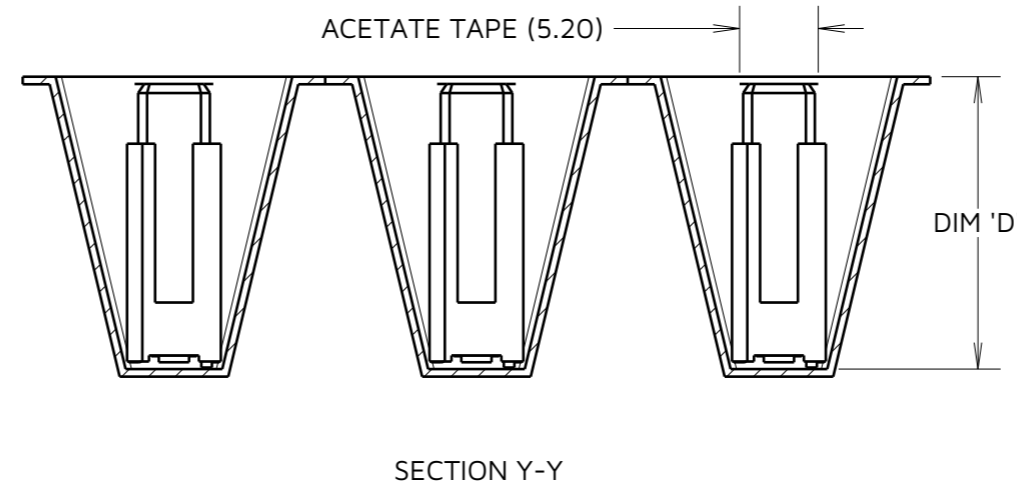
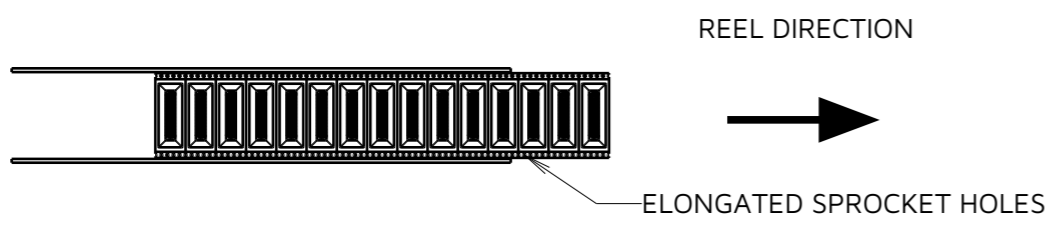
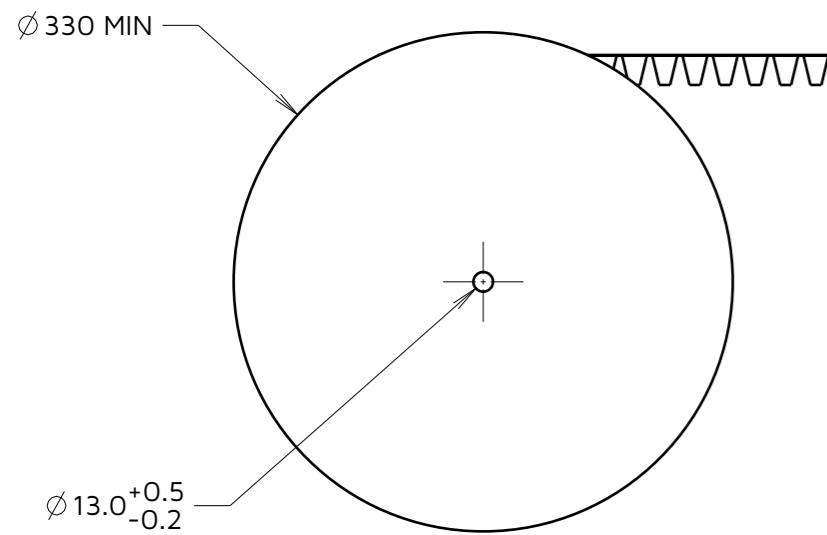
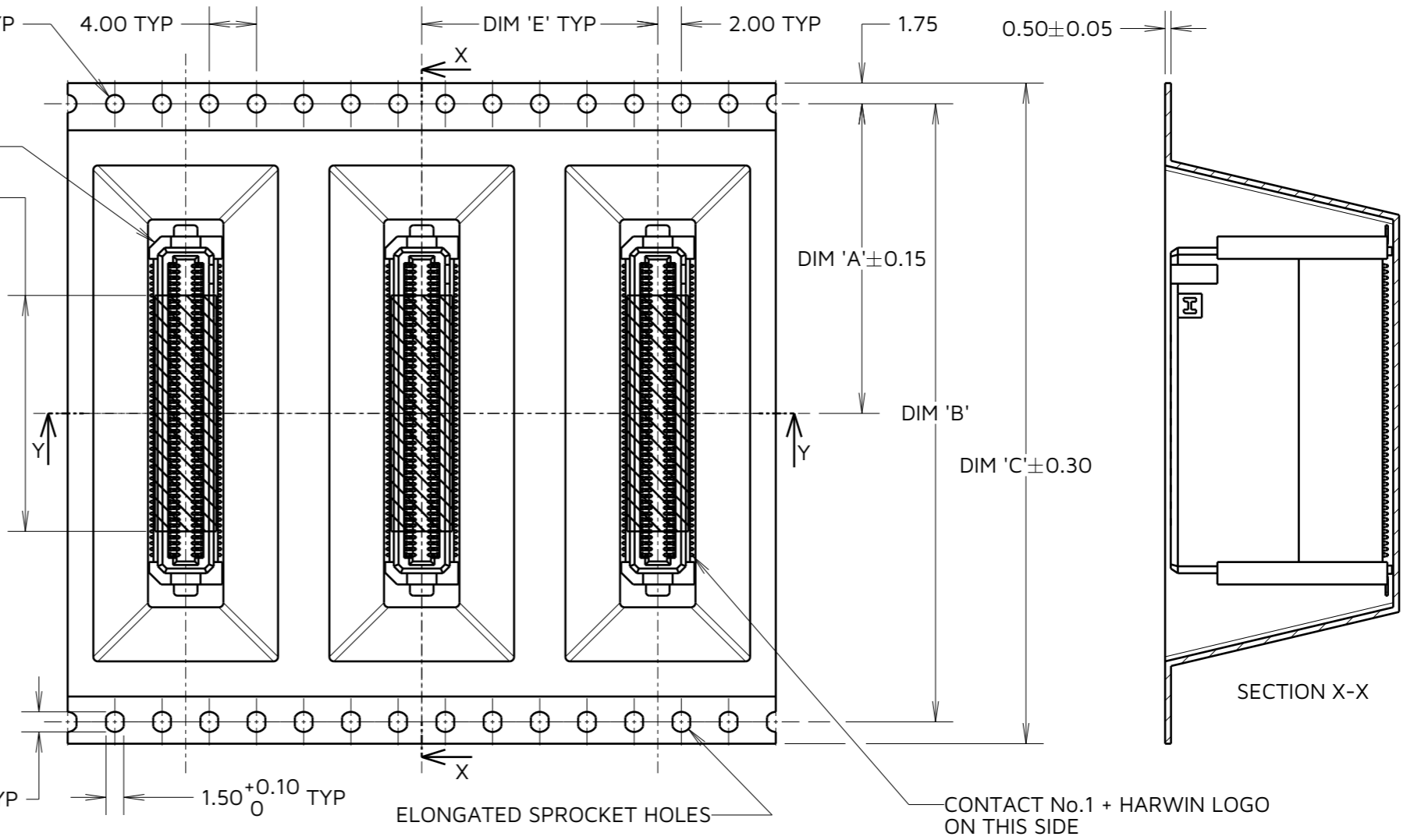
HEIGHT: \_\_\_\_\_  
SEE TABLE 1 ON SHEET 3

No. OF CONTACTS: \_\_\_\_\_  
SEE TABLE 3

Ø 1.50<sup>+0.10</sup><sub>0</sub> TYP  
4.00 TYP  
DIM 'E' TYP  
2.00 TYP  
1.75  
0.50±0.05  
ORIENTATION FEATURE  
ACETATE TAPE  
CONTACTS 30-80 = (11.0)  
CONTACTS 100-160 = (28.5)

TABLE 3: DIMENSIONS

PART No.	No. OF CONTACTS	DIM 'A'	DIM 'B'	DIM 'C'	DIM 'D'	DIM 'E'	REEL QTY
F10-100XXX45R	30	14.20	28.40	32.00	07.40	16.00	550PCS
	100	26.20	52.40	56.00			
F10-101XXX45R	30	20.20	40.40	44.00	14.40	16.00	250PCS
	100	26.20	52.40	56.00			
F10-102XXX45R	30	20.20	40.40	44.00	19.33	20.00	150PCS
	40						
	60						
	80	26.20	52.40	56.00			
	100						
	120						
140	34.20	68.40	72.00				
160							



AB	2	30.04.24	34005
NAME	ISS.	DATE	CN/CO
APPROVED:		A.BOXALL	
CHECKED:		F.CHRISPINE	
DRAWN:		A.BOXALL	
ASSEMBLY DRG:			

NOTES:  
5. PRODUCT TAPE AND REELED IN ACCORDANCE WITH EIA-481 STANDARD.  
6. CARRIER TAPE MATERIAL: BLACK POLYSTYRENE.  
7. TAPE POCKETS MAY DIFFER VISUALLY FROM DRAWING.  
8. SEE TABLE FOR QUANTITY PER REEL.



TOLERANCES  
X. = ±1mm  
X.X = ±0.50mm  
X.XX = ±0.20mm  
X.XXX = ±0.01mm  
ANGLES = ±5°  
UNLESS STATED

THIS DRAWING AND ANY INFORMATION OR DESCRIPTIVE MATTER SET OUT HEREON ARE CONFIDENTIAL AND COPYRIGHT PROPERTY OF THE HARWIN GROUP AND MUST NOT BE DISCLOSED, LOANED, COPIED OR USED FOR MANUFACTURING, TENDERING OR FOR ANY OTHER PURPOSE WITHOUT THEIR WRITTEN PERMISSION.

MATERIAL:  
SEE NOTE 6

TITLE: 0.5mm PITCH FEMALE FLECTO CONNECTOR SIGNAL CONTACTS  
DRAWING NUMBER: F10-10XXXX45R  
SHT 4 OF 4