

Customer Information Sheet

IF IN DOUBT - ASK

©

NOT TO SCALE

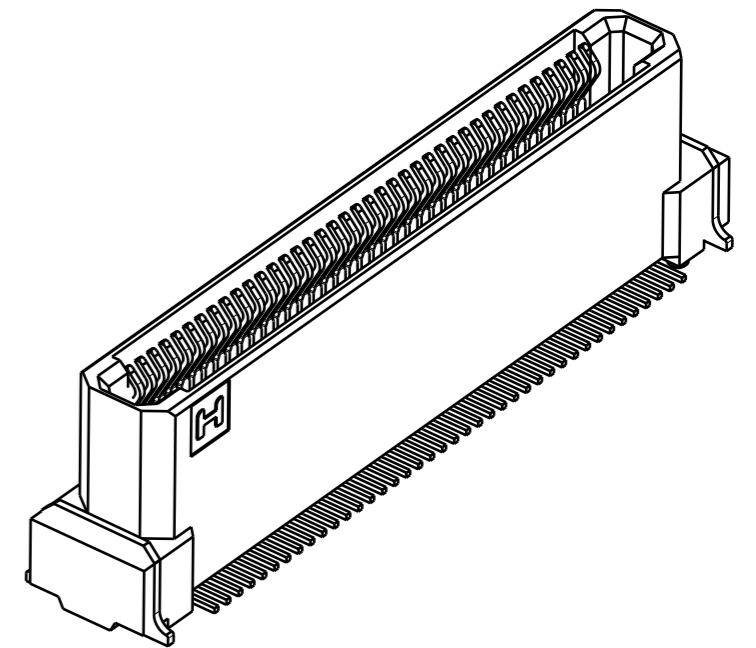
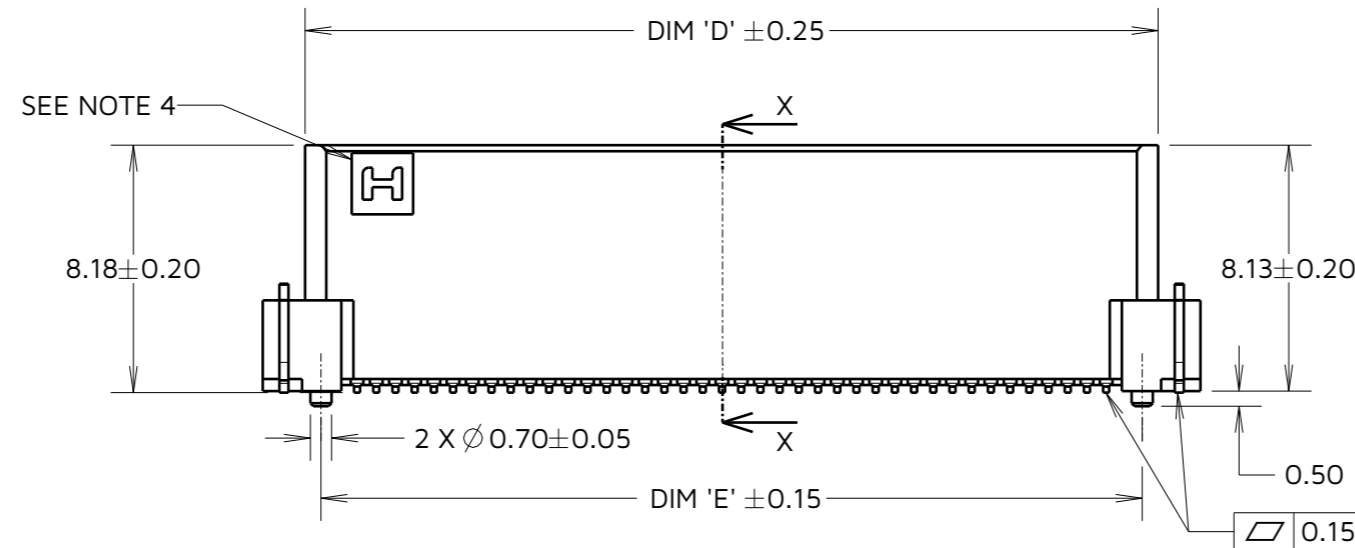
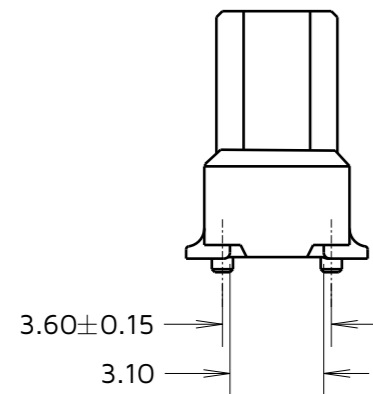
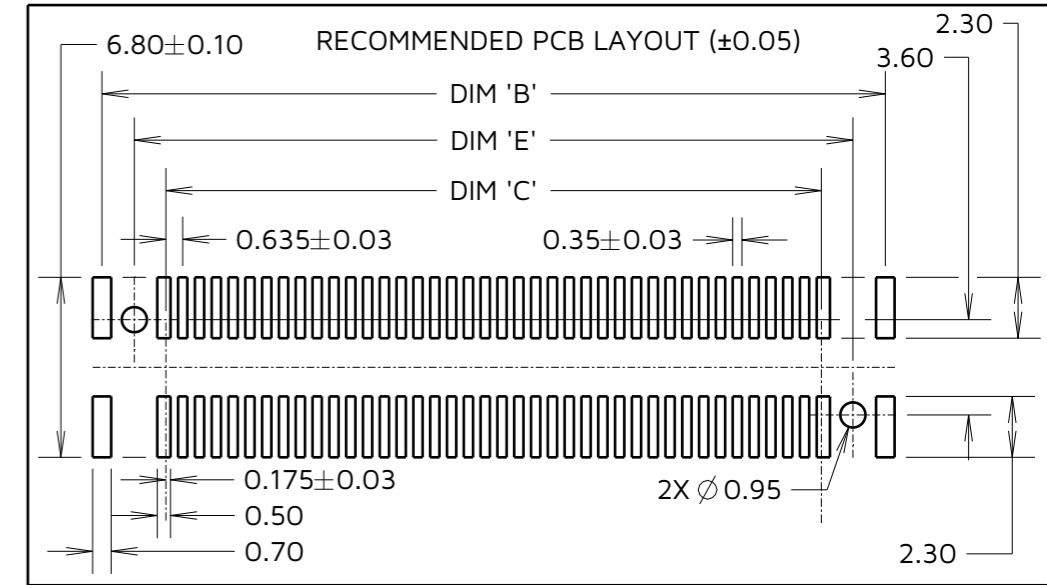
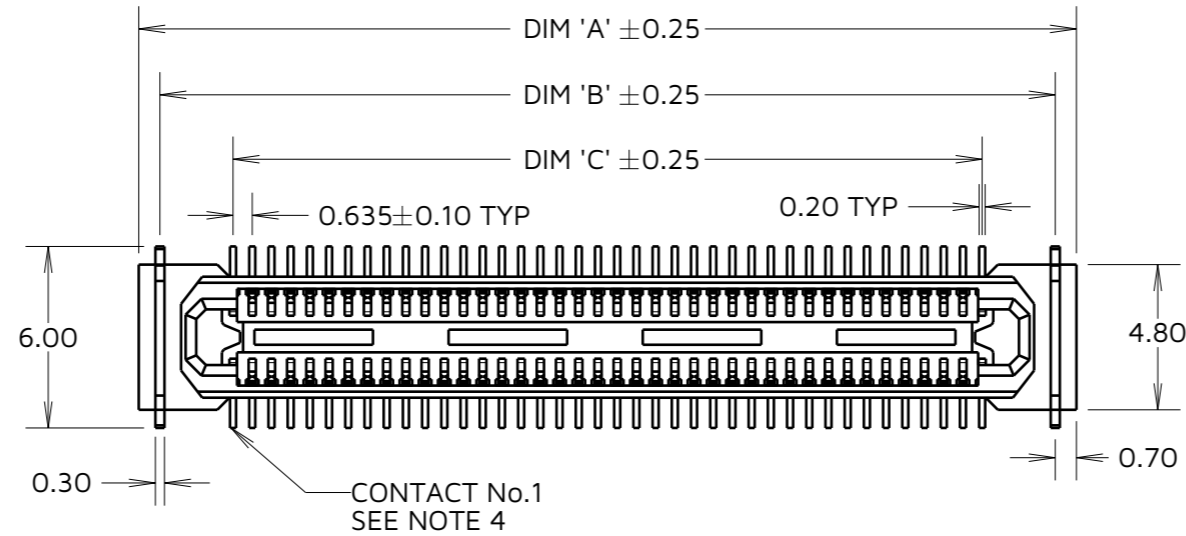
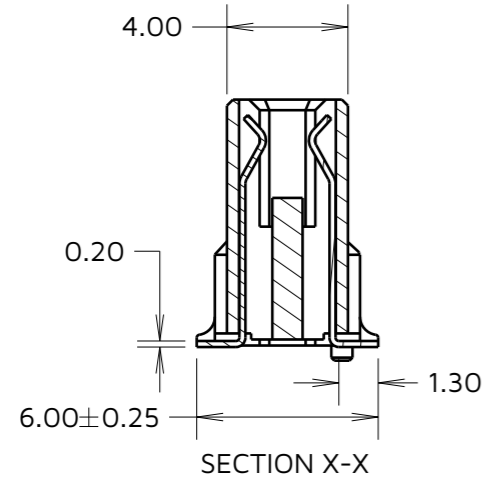
THIRD ANGLE PROJECTION

ALL DIMENSIONS IN mm

ORDER CODE:

F20-101XXX45R

No. OF CONTACTS:
 060, 080



NOTES:

- SEE COMPONENT SPECIFICATION C057XX (LATEST ISSUE) FOR COMPLETE CONNECTOR SPECIFICATIONS.
- PART SHOWN IS F20-10108045R, SEE ORDER CODE FOR POSSIBLE CONFIGURATIONS.
- SEE SHEET 4 FOR TAPE & REEL DETAILS.
- HARWIN LOGO SHOWN IN THIS ORIENTATION FOR REFERENCE ONLY. LOGO IS UNRELATED TO CONTACT No.1, AS CONTACT No.1 WILL ALWAYS BE THIS POSITION.

TABLE 1: DIMENSIONS

No. OF CONTACTS	DIM 'A'	DIM 'B'	DIM 'C'	DIM 'D'	DIM 'E'
60	24.65	23.25	18.42	21.85	20.80
80	31.00	29.60	24.77	28.20	27.15

AB	2	24.02.24	33735
NAME	ISS.	DATE	CN/CO
APPROVED: A.YEOMANS			
CHECKED: M.PLESTED			
DRAWN: A.BOXALL			
ASSEMBLY DRG:			

HARWIN

www.harwin.com

TOLERANCES
X = ±1mm
X.X = ±0.50mm
X.XX = ±0.20mm
X.XXX = ±0.01mm
ANGLES = ±5°
UNLESS STATED

THIS DRAWING AND ANY INFORMATION OR DESCRIPTIVE MATTER SET OUT HEREON ARE CONFIDENTIAL AND COPYRIGHT PROPERTY OF THE HARWIN GROUP AND MUST NOT BE DISCLOSED, LOANED, COPIED OR USED FOR MANUFACTURING, TENDERING OR FOR ANY OTHER PURPOSE WITHOUT THEIR WRITTEN PERMISSION.

MATERIAL:

SEE NOTE 1

TITLE: **0.635mm PITCH FEMALE FLECTO CONNECTOR (8.18mm HEIGHT)**

DRAWING NUMBER: **F20-101XXX45R**

SHT 3 OF 4

Customer Information Sheet

IF IN DOUBT - ASK

©

NOT TO SCALE

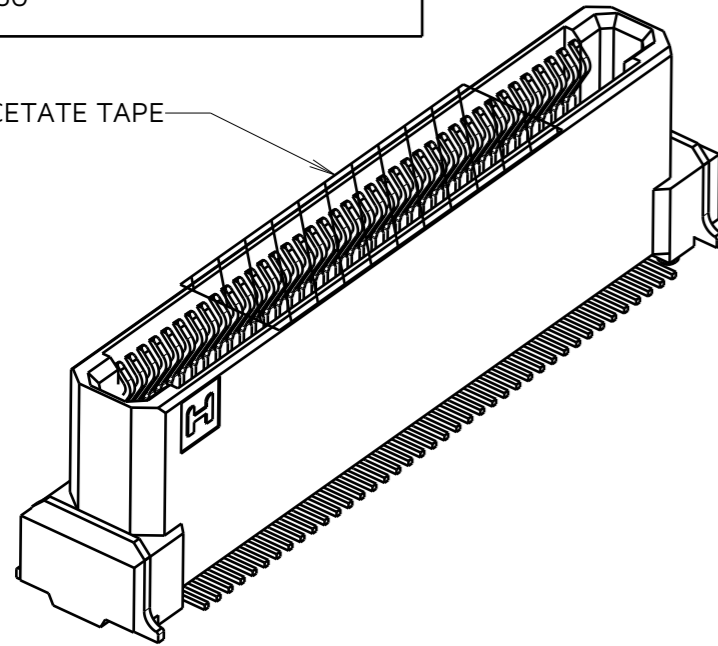
THIRD ANGLE PROJECTION

ALL DIMENSIONS IN mm

ORDER CODE:
F20-101XXX45R

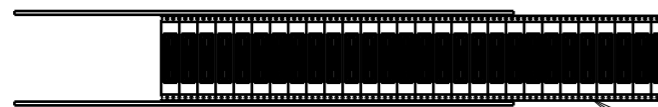
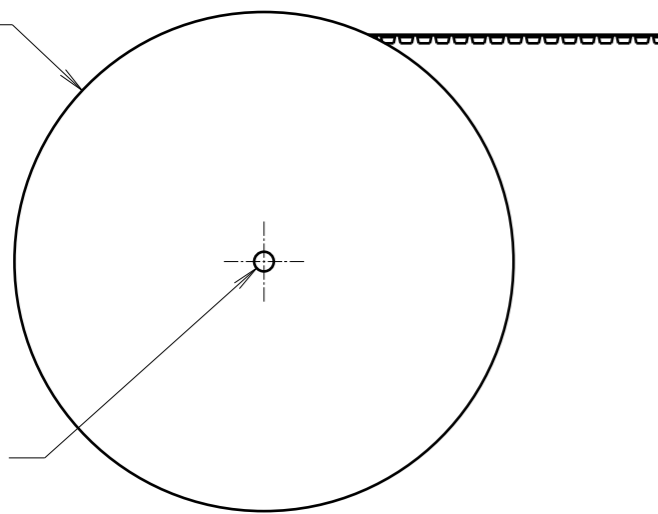
No. OF CONTACTS:
060, 080

ACETATE TAPE



Ø 330 MIN

Ø 13.0^{+0.5}_{-0.2}



Ø 1.50^{+0.10}₀ TYP

4.00

16.00

2.00±0.15

1.75

0.50±0.05

SEE NOTE 9

ACETATE TAPE (15.0)

DIM 'A'±0.15

DIM 'B'

DIM 'C'±0.30

CONTACT No.1

SECTION X-X

1.70^{+0.15}_{-0.05} TYP

1.50^{+0.10}₀ TYP

ELONGATED SPROCKET HOLE

SEE NOTE 9

ACETATE TAPE (4.2)

9.18

REEL DIRECTION



SECTION Y-Y

ELONGATED SPROCKET HOLE

No. OF CONTACTS	DIM 'A'	DIM 'B'	DIM 'C'
60	20.20	40.40	44.00
80	26.20	52.40	56.00

AB	2	24.02.24	33735
NAME	ISS.	DATE	CN/CO
APPROVED: A.YEOMANS			
CHECKED: M.PLESTED			
DRAWN: A.BOXALL			
ASSEMBLY DRG:			

NOTES:

- PRODUCT TAPE AND REELED IN ACCORDANCE WITH EIA-481 STANDARD.
- CARRIER TAPE MATERIAL: BLACK POLYSTYRENE.
- COMPONENTS PER REEL: 400PCS
- TAPE POCKETS MAY DIFFER VISUALLY FROM DRAWING.
- POSITION OF HARWIN LOGO IS NOT CRITICAL AND MAY BE IN EITHER MARKED POSITION. LOGO DOES NOT AFFECT CONTACT No.1.

HARWIN

www.harwin.com

TOLERANCES
X. = ±1mm
X.X = ±0.50mm
X.XX = ±0.20mm
X.XXX = ±0.01mm
ANGLES = ±5°
UNLESS STATED

THIS DRAWING AND ANY INFORMATION OR DESCRIPTIVE MATTER SET OUT HEREON ARE CONFIDENTIAL AND COPYRIGHT PROPERTY OF THE HARWIN GROUP AND MUST NOT BE DISCLOSED, LOANED, COPIED OR USED FOR MANUFACTURING, TENDERING OR FOR ANY OTHER PURPOSE WITHOUT THEIR WRITTEN PERMISSION.

MATERIAL:

SEE NOTE 6

TITLE: 0.635mm PITCH FEMALE FLECTO CONNECTOR (8.18mm HEIGHT)

DRAWING NUMBER:
F20-101XXX45R

SHT
4 OF
4